



# MAITRIPA COLLEGE CATALOG

*2026 – 2027 ACADEMIC YEAR*

Maitripa College is a non-profit corporation authorized by the State of Oregon to offer and confer the academic degrees described herein, following a determination that state academic standards will be satisfied under OAR 583-030. Inquiries concerning the standards or school compliance may be directed to the Office of Degree Authorization, Higher Education Coordinating Commission, 3225 25<sup>th</sup> Street SE, Salem, Oregon 97302.

# TABLE OF CONTENTS

---

<b>About the College</b> .....	<b>2</b>
<i>Mission</i> .....	2
<i>Vision</i> .....	2
<i>Lineage</i> .....	2
<i>Educational Philosophy</i> .....	2
Developing the wisdom to sustain compassion.....	2
<i>Academic Freedom</i> .....	3
<i>History</i> .....	3
<b>Academic Calendar</b> .....	<b>4</b>
<i>Fall Semester 2026</i> .....	4
<i>Spring Semester 2027</i> .....	4
<i>Summer Term 2027</i> .....	4
<b>Admissions</b> .....	<b>5</b>
<i>Degree-Seeking Admission</i> .....	5
<i>Continuing Education and Auditing Admission</i> .....	5
Continuing Education (CE) Students.....	5
Auditing Students.....	6
<i>Enrollment in Courses</i> .....	6
Registration.....	6
Drop/Add Period.....	6
Repeating Courses .....	6
<i>Degree Program Change</i> .....	6
<i>Transfer Credit</i> .....	7
Transfer of Credit to Other Schools.....	7
Transfer of Credit within Programs at Maitripa College .....	7
Transfer of Credit from Other Schools .....	7
Transfer Credit: Clinical Pastoral Education (CPE) Chaplaincy Internship.....	8
<i>Transcripts</i> .....	8
Non-Class Credit.....	9
<i>English Language Proficiency</i> .....	9
Accepted Tests and Minimum Scores .....	9
Alternative Test — Duolingo English Test.....	9
Exemptions.....	10
Admissions Committee Discretion .....	10
Submitting Scores .....	10
<i>International Students</i> .....	11
Summary of How to Obtain F-1 Visa Status to Attend Maitripa College .....	11
After Receiving Your F-1 Visa .....	11

Your Responsibility.....	11
SEVIS Designated School Officials.....	11
Resources .....	11
<b>Tuition, Fees, and Financial Aid.....</b>	<b>12</b>
<i>Tuition and Fee Schedule</i> .....	12
Tuition and Fee Schedule for 2026-2027.....	12
Annual Estimated Costs For 2026-2027.....	12
<i>Payment Plans</i> .....	12
Payment Plan Schedule.....	13
<i>Refund Schedule</i> .....	13
<i>Service Charges and Holds</i> .....	13
Held Transcripts and Registration for Past Due Accounts .....	14
<i>Tuition Discounts</i> .....	14
Alumni.....	14
Students Aged 60 and Older.....	14
FPMT .....	14
<i>Financial Aid</i> .....	14
<i>Scholarships</i> .....	14
Monastic Scholarships.....	14
<i>Tuition and Fees for Credit Transferred, Attempted, or Earned by Final Mastery     Demonstration, Internship, Or Independent Study</i> .....	15
Clinical Pastoral Education.....	15
SC800 Field Education.....	15
Independent Study Courses.....	15
SRV800 Independent Study in Community Service (1-2 credits).....	15
Final Mastery Degree Requirement.....	16
<b>Academic Programs.....</b>	<b>17</b>
<i>Overview of Academic Offerings</i> .....	17
<i>Program Learning Outcomes</i> .....	17
<i>Student Categories</i> .....	17
Degree Students.....	17
Continuing Education Students.....	17
Auditors.....	18
Continuing Education Students and Auditors.....	18
<i>Master of Arts in Buddhist Studies (MA, 44 credits)</i> .....	18
Degree Required Courses.....	18
Scholarship Pillar Course Groupings .....	19
Meditation Pillar Course Group.....	19
Service Pillar Course Group.....	19
Final Mastery Degree Requirement.....	19
Option Tibetan Track: Classical Tibetan Language Course Group .....	19
Option Education Track: Contemplative Education Course Group.....	20
General Electives and Curricular Planning.....	20
<i>Master of Divinity Degree (MDiv, 72 credits)</i> .....	20

Scholarship Pillar Course Groupings .....	21
Meditation Pillar Course Group .....	22
Service Pillar Course Groups .....	22
Field Education Placement and/or Clinical Pastoral Education .....	23
Final Mastery Degree Requirement .....	23
General Electives and Curricular Planning .....	23
<b>Course Descriptions .....</b>	<b>24</b>
<i>Action Research Project (ARP)</i> .....	24
<i>Community Service (CS)</i> .....	24
<i>Contemplative Education (ED)</i> .....	25
<i>History (HIS)</i> .....	26
<i>Meditation (MDT)</i> .....	27
<i>Philosophy (PHL)</i> .....	29
<i>Theology (THL)</i> .....	33
<i>Tibetan (TIB)</i> .....	41
<b>Academic Policies and Regulations .....</b>	<b>43</b>
<i>Academic Advising</i> .....	43
Responsibilities of Maitripa College .....	43
Responsibilities of Students .....	44
<i>Academic Framework</i> .....	44
Academic Year .....	44
Credit Earned .....	44
Academic Standards .....	44
Academic Evaluations .....	44
Advanced Standing .....	44
Alumni .....	44
<i>Enrollment and Progress</i> .....	45
Class Attendance .....	45
Class Withdrawal and Incomplete .....	45
Program Leave of Absence .....	45
Program Withdrawals .....	46
Satisfactory Academic Progress .....	46
Separation .....	46
Readmission to Graduate Degree Standing .....	46
<i>Grading and Appeals</i> .....	46
Examinations .....	46
Grading System .....	46
Grade of Incomplete .....	47
Grade Changes .....	47
Appealing a Grade .....	47
Grade Appeals Committee .....	48
Academic Grievance Policy .....	48
<i>Degree Completion</i> .....	50
Degree Requirements .....	50

Demonstration of Final Mastery.....	51
Degree Conferral, Diplomas, and Transcripts .....	51
Commencement Ceremony .....	51
<b>Faculty and Administration .....</b>	<b>52</b>
<i>Administrative Structure</i> .....	52
Board of Trustees .....	52
President .....	52
Faculty and Senior Sangha .....	52
Administration.....	53
Primary Consultants .....	54
<i>Visiting Research Professor</i> .....	54
<b>Student Services.....</b>	<b>55</b>
<i>General Building Information</i> .....	55
<i>Environmental Stewardship: Building, Energy, and Sustainability Practices</i> .....	55
<i>Facilities: Specific Information for Students</i> .....	55
Administrative Offices.....	55
Course Materials .....	55
Public Programs.....	55
Jokhang Meditation Hall.....	56
Student Commons.....	56
Parking.....	56
<i>James A. Blumenthal Library</i> .....	56
Mission Statement.....	56
Access to Maitripa College Library Collections.....	57
Library Use .....	57
Borrowing Privileges for Print and Multimedia .....	57
Circulation.....	57
Overdue, Lost, and Damaged Materials .....	58
Course Reserves .....	58
Library Notices.....	58
<i>Minimum Technology Requirements</i> .....	58
Recommended Student Computer Specification .....	58
Required Institutional Platforms .....	59
Software Requirements.....	60
Platform Summary .....	61
Technical Support and Questions.....	61
<b>College Policies and Procedures .....</b>	<b>62</b>
<i>Foundational Values and Commitments</i> .....	62
Nondiscrimination and Equal Opportunity Policy .....	62
Commitment to Equity and Inclusion .....	62
<i>Student Rights, Privacy, and Access</i> .....	62
Confidential Records.....	62
Family Educational Rights and Privacy Act (FERPA).....	63
Records Affecting Students.....	63
Accessibility and Accommodations Policy .....	64

<i>Safety and Ethical Conduct</i> .....	66
Duty of Care .....	66
Safeguarding Students.....	70
Designated Protection People at Maitripa College .....	71
Sexual Misconduct Policy.....	72
Consensual Relationships Policy .....	73
<i>Academic and Community Standards</i> .....	75
Academic Integrity and Student Conduct Policy .....	75
Community Standards and Ethical Conduct Policy.....	76
<i>Grievance and Resolution Procedures</i> .....	77
Grievances and Sanctions.....	77
Student Complaint and Grievance Procedures Flowchart.....	80
<i>Legal and Regulatory Notices</i> .....	81
State Authorization for Distance Education .....	81
<b>Campus Safety and Emergency Procedures</b> .....	<b>83</b>
<b>Important Phone Numbers And Contact Information</b> .....	<b>84</b>
<i>Student Information</i> .....	84
<i>Maitripa Faculty and Administration Contact Information</i> .....	84
<i>Faculty and Senior Sangha</i> .....	84
<i>Administration</i> .....	84

## ABOUT THE COLLEGE

---

### MISSION

May Compassion and Wisdom Serve the World.

Maitripa College, a Buddhist institution rooted in the Nalanda tradition, offers graduate and lifelong learning programs in both physical and digital formats. Through the integration of contemplative practice, Buddhist scholarship, academic inquiry, and spiritual formation, grounded in three pillars of scholarship, meditation, and service, we educate students in critical thinking, ethical reasoning, and contemplative methodologies. Our programs prepare graduates to apply their learning in service to their communities and the world with compassion, joy, and equanimity.

### VISION

To cultivate transformative leaders who embody Buddhist wisdom and compassion, integrating a good heart, tolerance, and joy in service to the world.

### LINEAGE

Maitripa College is grounded in the living lineage of Tibetan Buddhism as transmitted through the Nalanda tradition of India and preserved and taught within the Tibetan Buddhist world. Founded by Yangsi Rinpoche and Lama Zopa Rinpoche, Maitripa College draws from centuries of scholarship, contemplative practice, and ethical formation passed down through authentic lineages. The College maintains close relationships with eminent Tibetan teachers and lineage holders, including His Holiness the Dalai Lama, and integrates traditional methods of study, debate, meditation, and service with contemporary academic inquiry. This lineage-based foundation ensures that Maitripa's programs are not only academically rigorous, but spiritually grounded—rooted in teachings that have been tested through generations of practice and dedicated to the cultivation of wisdom and compassion for the benefit of the world.

### EDUCATIONAL PHILOSOPHY

Maitripa College is an affiliated member of the *Foundation for the Preservation of the Mahayana Tradition* (FPMT), and functions as a nonprofit organization. The College is dedicated to higher education through three educational pillars of scholarship, meditation, and service. We offer an education that not only teaches these principles as a theory but also guides students to integrate them into their minds, hearts, and daily lives inspired by an attitude of universal responsibility. Maitripa College provides an intellectual, experiential, and practical education inspired by Buddhist principles.

The core of education at Maitripa is a Buddhist Studies curriculum of philosophical study, meditation training, and service learning, under the direction of Yangsi Rinpoche, which provides a foundation for every degree program.

### DEVELOPING THE WISDOM TO SUSTAIN COMPASSION

Maitripa College's educational program is based in the conviction that Buddhist thought and practice has significant contributions to make to American society and culture. On the basis of a

worldview that emphasizes the interdependence of individual, society, and environment, Buddhism encourages the cultivation of wisdom to create compassionate individuals with a sense of responsibility for the community and world in which they live. Maitripa College seeks to do this through the powerful medium of higher education, through the offering and development of degree programs for adults. The core program at Maitripa integrates rigorous training in Buddhist thought and philosophy with the application of those ideas through both contemplative practices and active community service. In the process, Maitripa College combines aspects of a modern liberal arts education with traditional tools from Tibetan Buddhist scholarship.

#### ACADEMIC FREEDOM

Maitripa College is committed to maintaining a climate of academic freedom, which is essential to the fulfillment of the educational mission of the College, and of fundamental importance to any academic institution. Academic freedom is defined in this case as the freedom of scholars, faculty, and students within the College to pursue knowledge and truth, to speak, write, engage in research or other creative work in order to expand knowledge, publish research findings, teach, and learn in an atmosphere of free inquiry and exposition without unreasonable restriction. Students and faculty at the College should bear in mind that these freedoms carry corresponding duties and responsibilities, which should be kept in mind at all times in order to maintain the integrity of the educational process.

Maitripa College faculty members have a primary obligation to fulfill their teaching and research responsibilities, and to be effective teachers and scholars. The freedom accorded to faculty members to seek and state the truth as they see it is implicative of a corresponding obligation of self-discipline. Faculty members must make every effort to be accurate, objective, and restrained, and show respect for the opinions of others. Faculty members must practice academic honesty. All interactions with students and peers must be governed by this guideline. Evaluation of students' work must be based on academic performance alone. Faculty members, students, and staff are not exempt from abiding by the rules of ethical conduct as put forth in this document.

#### HISTORY

Maitripa College is an affiliated member of the *Foundation for the Preservation of the Mahayana Tradition* (FPMT). The name Maitripa was given to the College by Lama Zopa Rinpoche, the founder (with Lama Thubten Yeshe) of FPMT. FPMT is an international nonprofit organization committed to creating harmonious environments and helping beings develop to their fullest potential of infinite wisdom and compassion.

Maitripa, whose name means “He Whose Protection is Loving-Kindness,” lived in the 11<sup>th</sup> century. He was the teacher of the famed saint Marpa the Translator, and counted the eminent Naropa among his contemporaries and teachers. Maitripa was at Nalanda during the time of the great Atisha, and at Vikramashila University at the height of its fame in India. He was renowned as a great scholar and yogi, but eventually left the monastery to continue his practice as a mahasiddha. Maitripa is particularly renowned for his transmission of the mahamudra teachings of the *Uttaratantra Shastra*, and for his spontaneous songs of spiritual realization.

Maitripa College represents the first steps in the fulfillment of the aspirations of our founder, Yangsi Rinpoche, who envisioned the development of a Buddhist College of higher education where students might gain a philosophical background in Buddhist thought while at the same time gaining a practical education and the tools to integrate both into the modern world.

# ACADEMIC CALENDAR

---

## FALL SEMESTER 2026

August 31	First day of Fall Term
September 7	Labor Day (US Holiday) no classes, offices closed
September 14	Last day to Drop/Add
October 15	Fall 2027 Degree Program Applications Open
November 1	Lhabab Düchen (Tibetan Buddhist holiday)
November 1	Spring and Summer Course Registration Opens
November 23-27	Fall Break, no classes, offices closed
December 3	Ganden Ngamchoe, Lama Tsongkhapa Day (Tibetan Buddhist holiday)
December 18	Last day of Fall Term
Dec 21-Jan 8	Winter Break, offices closed

## SPRING SEMESTER 2027

January 11	First day of Spring Term
January 18	Martin Luther King, Jr. Day (US Holiday) no classes, offices closed
February 7	Losar, Tibetan New Year (Tibetan holiday)
February 15	Priority Application Deadline for Fall 2027
February 20	Monlam Chotrul Duchen, Day of Miracles (Tibetan Buddhist Holiday)
March 15	Priority Application Decisions
March 22-26	Spring Break, no classes, offices closed
April 15	Fall Registration Opens
April 30	Last day of Spring Term

## SUMMER TERM 2027

May 24	First day of Summer Term
May 31	Memorial Day (US Holiday) no classes, offices closed
June 15	Last Day to Submit Degree Program Application for Fall 2027
June 19	Juneteenth (US Holiday) no classes, offices closed
July 5	Independence Day, observed (US Holiday) no classes, offices closed
July 6	His Holiness the Dalai Lama's Birthday
July 30	Last day of Summer Term
August 6	Chokhor Duchen, First Turning of the Wheel (Tibetan Buddhist Holiday)

# ADMISSIONS

---

## DEGREE-SEEKING ADMISSION

Students interested in enrolling in degree programs must submit a completed application by the date designated in the application materials and website. Degree Program students matriculate each Fall semester. To apply for admission, students must complete and submit the online application, including a non-refundable application fee. A calendar of important dates and deadlines is available on the Academic Calendar and on the Admissions website.

Admission to current degree programs at Maitripa College include a bachelor's degree (BA or BS) from an accredited institution, and a completed application including:

- Letters of Recommendation from two people with whom you have acted as student, mentee, colleague, volunteer, or employee
- Official transcripts from all undergraduate and graduate colleges attended
- Resume or CV
- Essay describing the development of your spiritual life, including a discussion of the development of your faith, practice and belief systems
- Statement of Interest including your goals in applying to this degree program, how you see this program relating to your personal and/or professional life, how you intend to use this degree, and what about Maitripa College appeals to you the most
- English language proficiency for applicants whose primary language is not English

All application materials will be reviewed by the Admissions Committee, after which an admissions interview will be scheduled.

Decisions will be sent out within a reasonable period of time. The admissions committee will act in accordance with Maitripa College's nondiscrimination policy, and all student information will be kept private.

## CONTINUING EDUCATION AND AUDITING ADMISSION

Students interested in taking classes without pursuing a degree can apply as Continuing Education or Auditing students. Once accepted, students will be led through the registration process and have an opportunity to meet with Admissions. Availability of courses for continuing education and auditing students will be posted each semester on the College's website and in the administrative office.

All students are expected to participate fully in the course as designed by the instructor. All students will have full access to course materials and college resources, including engagement with classmates, faculty, and teaching assistants, library, and community practices.

## CONTINUING EDUCATION (CE) STUDENTS

- Live in Oregon or states included in the State Authorization for Distance Education (see *College Policies and Procedures, Legal and Regulatory Notices*)
- Are expected to comply with the full attendance and evaluation requirements for the course(s).
- Receive a grade, transcript, and credit hours for completed courses

## AUDITING STUDENTS

- Live outside of Oregon and states not included in the State Authorization for Distance Education (see *College Policies and Procedures, Legal and Regulatory Notices*)
- Auditing students will not receive a grade, transcript, or credit for courses completed

Please refer all admissions queries to:

Maitripa College  
Admissions  
1632 SE 11<sup>th</sup> Avenue  
Portland, OR 97214  
503-235-2477  
admissions@maitripa.org  
[www.maitripa.org/registrar/](http://www.maitripa.org/registrar/)

## ENROLLMENT IN COURSES

Enrollment for any course is open through the deadline for adding/dropping a class. Very special circumstances may extend the enrollment deadline by permission of instructor only.

## REGISTRATION

Students will be required to register for each semester of enrollment at Maitripa College. Registration is completed by logging into a student account and adding or dropping classes. Students who need assistance can request an appointment with their advisor, the Office of the Registrar or Technical Support. Registration opens at least one month before classes begin. Students may not register for classes if their accounts with the College are not in good standing.

## DROP/ADD PERIOD

Students can add/drop classes during the first two full weeks of Fall and Spring terms. If a student plans to add a course after the course start date, they must attend the classes prior to adding unless approved absence is requested and granted by the professor. Any increase in tuition will be invoiced on the day of the change to the schedule and due immediately. If the student is on a payment plan and adds a class, the plan will be adjusted accordingly. Any outstanding tuition due for the month will be due immediately. Likewise, if a class is dropped during the add/drop period, the bookkeeper will process the refund on the day the dropped class is requested.

## REPEATING COURSES

Courses at Maitripa may be repeated for a grade if the grade received in the course was a C+ or below. The repeated course must be the same course as one previously taken. The grading basis must also be the same. Students who repeat a course do not earn additional credit toward their degree. Credit from the repeated course will replace the previous course in computing cumulative grade point average. Both courses will remain on the student's transcript.

## DEGREE PROGRAM CHANGE

Students wishing to change degree programs must submit the Degree Program Change Request Form. Students who have completed less than two semesters of work for an existing degree may be asked to submit a new application and the Internal Transfer of Credit form. Students who have completed more than two semesters of work for an existing degree must submit the Degree Program Change Request form and the Internal Transfer of Credit form.

## TRANSFER CREDIT

### TRANSFER OF CREDIT TO OTHER SCHOOLS

Transfer of credit is always at the discretion of the receiving school, depends on comparability of curricula, and may depend on comparability of accreditation.

### TRANSFER OF CREDIT WITHIN PROGRAMS AT MAITRIPA COLLEGE

Credits accumulated at Maitripa College for a particular degree program may be transferred to another degree program if the student is in compliance with the policies relating to and has completed the formal process for degree program change (see applicable section in this handbook). To complete this process, students must submit the Internal Transfer of Credit form, available from the administrative office.

### TRANSFER OF CREDIT FROM OTHER SCHOOLS

Courses from other accredited or HECC-approved colleges, universities, or educational programs may be counted for credit at Maitripa College under certain circumstances and when meeting College criteria. The below policy outlines the maximum transfer credits that may be applied towards a Maitripa College degree, and the general considerations for assessing course equivalency or elective course credit. The Academic Program Director receives requests for transfer credit, and may review transcripts, course descriptions, and course syllabi in a case by case assessment of appropriate awarding of credit according to the below guidelines.

Students wishing to be awarded transfer credit for academic work completed at the graduate level before admissions or after matriculation must submit a Transfer Credit Authorization form to the Program Director for review. There may be an administrative fee for review of Transfer Credit Authorization form. The Program Director and/or Chief Academic Officer will make a determination whether courses are relevant to the curriculum of study, meet general graduation requirements, count towards specific degree requirements, or may be equivalent to Maitripa College courses. This determination will be based upon the criteria outlined below and review of materials such as transcripts, syllabi, and course descriptions.

Maitripa College graduate students may accrue a maximum total of 25% of the credit required towards the degree (18 credits in the MDiv, 11 credits in the MA). The maximum credit total for Clinical Pastoral Education (CPE) completed at an ACPE accredited program is 1 unit, which will transfer as six credits, and may be taken at any time in the student's degree program.

Maitripa College transfer credit process includes student petition and administrative review and approval that the below criteria are met. Upon review of the student's petition for transfer credit, the administration is satisfied that:

1. The course was/is offered by an accredited university, and is at corresponding degree level, or otherwise approved by the HECC

2. The course was/is equivalent to courses in the student's degree curricula and the total number of hours of student effort may be calculated according to OAR definitions of credit hours for a semester
3. The area of course focus was/is pertinent to the degree and closely aligned with the student's professional and academic interests,
4. Those interests could not be met under supervision of Maitripa faculty or through coursework on campus
5. If the proposed transfer credit is for a course that requires community service, volunteer service hours and mentorship was or will be secured at a suitable and enriching community organization with mentorship or supervision
6. Maitripa College is able to provide faculty oversight in reviewing the student's final papers and coursework produced, liaison with mentors or instructors as needed, and/or grant administrative oversight to manage transcripts, student assessment, etc.
7. The grade earned must be in accordance with Maitripa College grade policies and OARs (C or above) to receive credit towards the degree

Maitripa College does not currently grant credit for non-collegiate work, other than the above specified Clinical Pastoral Education chaplaincy practicum intended for MDiv students.

#### TRANSFER CREDIT: CLINICAL PASTORAL EDUCATION (CPE) CHAPLAINCY INTERNSHIP

Maitripa College awards six credits as transfer credits from one successfully completed Clinical Pastoral Education (CPE) unit offered by a qualifying program and site. Transfer credit for internship is calculated based on research that demonstrates six credits for one unit of CPE is consistent with comparable MDiv programs and accepted by APC/BCCI educational standards for degree programs and equivalencies. One unit of CPE is defined as a minimum of 400 total hours of student effort, comprised of 100 hours of education delivered by a Certified Educator and 300 hours of direct chaplain care to patients, family, and staff, or social services clients, at a site placement approved by the Certified Educator and supervised by site mentor(s). Curriculum design, learning outcomes, and student evaluation is solely administered by the CPE program. Qualifying CPE programs are those which are recognized and accepted by BCCI, Inc as meeting the clinical education requirement for Board Certified Chaplain at the Associate or Full level. In 2025, eligible CPE programs are those offered by ACPE, CPSP, and CPEI; this is subject to change and it is the student's responsibility to check current qualifying programs during their application process. MDiv students must apply for one unit of CPE internship, pay any application and tuition fees, and abide by all CPE program requirements, including but not limited to onboarding, orientation, curricula requirements, ethical codes, laws, and employee health rules. Upon completion of one unit, the student must document their unit by registering the unit with the corresponding national CPE agency, provide the student's final evaluation by the Certified Educator to the MDiv program director, and provide certificate of completion to the Registrar at Maitripa College. The MDiv program director is available for advising and support from preparation to completion of clinical internships.

#### TRANSCRIPTS

Grade transcripts will be available to students from the administrative offices beginning one month after grades are turned in for each semester. Students can check their current, unofficial transcripts by logging in to Populi. For assistance in accessing unofficial transcripts via Populi,

please refer to the Current Students page of the Maitripa College website or contact the Registrar at registrar@maitripa.org.

The request for official transcripts must be made in writing. Allow 5 business days for processing official transcripts. Transcripts will be mailed to your current mailing address, or to other addresses as requested in writing. Transcripts will not be released to students with an outstanding balance on their account.

#### NON-CLASS CREDIT

Other than the approved service-learning curriculum, Maitripa College does not recognize any non-class credit for work done outside of classes.

#### ENGLISH LANGUAGE PROFICIENCY

Applicants whose primary language is not English are required to demonstrate English language proficiency as a condition of admission. Maitripa College's programs involve sustained graduate level reading, writing, discussion, and collaborative inquiry; strong English skills are essential to full participation and to the quality of the learning community as a whole.

The standard accepted tests are the TOEFL iBT and the IELTS Academic. Scores must be from a test taken within two years of the application deadline. Official scores should be submitted directly to Maitripa College's Office of Admissions as part of the complete application.

#### ACCEPTED TESTS AND MINIMUM SCORES

Test	Minimum	Recommended	Notes
TOEFL iBT (0–120 scale, tests before Jan 21, 2026)	<b>80</b>	90–100	Section scores reported separately
TOEFL iBT (1–6 band scale, tests from Jan 21, 2026)	<b>4.0</b>	4.5–5.0	Both old and new scores shown on reports through 2028
IELTS Academic	<b>6.5</b>	7.0	Academic band only; General Training not accepted

#### Note on TOEFL scoring:

Effective January 21, 2026, ETS introduced a new 1–6 band scoring scale for the TOEFL iBT, replacing the previous 0–120 scale. During the transition period through 2028, all TOEFL score reports will display **both** the old and new scores side by side. Maitripa College will accept scores under either scale; applicants should submit whatever score report they receive. A band score of 4.5 on the new scale is approximately equivalent to 90 on the old scale.

#### ALTERNATIVE TEST — DUOLINGO ENGLISH TEST

Applicants who are unable to access a TOEFL or IELTS testing center in their location may request consideration of a Duolingo English Test (DET) score in place of the standard tests. The

DET is an adaptive, AI-scored test taken online; it is accepted by a growing number of graduate institutions but is not Maitripa College's standard requirement. Requests to substitute DET scores must be made in writing to the Office of Admissions before the application deadline, with a brief explanation of why TOEFL or IELTS testing is not accessible. The admissions committee will review such requests on a case-by-case basis and may require an interview as part of the evaluation. The suggested minimum DET score for consideration is 110 (recommended: 120–125).

#### Note

Acceptance of a DET score is at the committee's discretion and does not guarantee admission. Applicants are strongly encouraged to take the TOEFL or IELTS if at all possible.

#### EXEMPTIONS

A proficiency test is not required if the applicant:

- Is a native speaker of English, or
- Has earned a bachelor's or higher degree from an institution where English is the sole language of instruction.

Applicants claiming exemption on the basis of prior English-medium study should indicate this in their application materials. The admissions committee may request documentation, such as an academic paper from their prior institution coursework.

#### ADMISSIONS COMMITTEE DISCRETION

Meeting the minimum score threshold does not guarantee admission, and scores somewhat below the minimum may be considered alongside other application materials at the committee's discretion. In such cases, the committee may request an admissions interview to further assess spoken English proficiency and readiness for graduate study.

Applicants with questions about the English language requirement are encouraged to contact the Office of Admissions before submitting an application.

#### SUBMITTING SCORES

Official test scores should be sent directly to Maitripa College by the testing organization. When ordering scores, use the information below.

**Institution:** Maitripa College

**Address:** 1632 SE 11th Avenue, Portland, OR 97214

**TOEFL code:** 7290

**Admissions email:** [admissions@maitripa.org](mailto:admissions@maitripa.org)

Scores submitted are valid for two years from the test date to meet the admissions requirements. Students should re-take the TOEFL or IELTS exam if it has been more than two years since their previous exam date.

We can use an unofficial copy of your Test of English as a Foreign Language (TOEFL) or International English Language Testing System (IELTS) score report to evaluate your

admissions application. However, Maitripa College must receive an official copy of your score directly from the testing center before the end of your first term of enrollment.

International graduate applicants who do not meet the minimum TOEFL or IELTS score requirements must contact the student services department to initiate a petition for special consideration.

#### INTERNATIONAL STUDENTS

Maitripa College is honored to welcome international students. We are committed to supporting you from application to graduation. Cultural diversity and creating global community are among our core values. We value the contributions you will make to our community; your unique history, religious traditions, and philosophical perspective; your experience. The combination of immersion in Buddhist education that is both rooted in tradition and grappling with modern application, coupled with the incredible beauty and unique culture of Portland, Oregon, creates an excellent environment for learning.

#### SUMMARY OF HOW TO OBTAIN F-1 VISA STATUS TO ATTEND MAITRIPA COLLEGE

- Apply and be accepted for admission to Maitripa College
- Provide Maitripa College with documentation of sufficient financing for at least one year of study, including living expenses and tuition
- Maitripa College will issue you an I-20 document
- Sign your I-20 and apply for your F-1 visa at the US Consulate in your home country

#### AFTER RECEIVING YOUR F-1 VISA

- Use your I-20 and F-1 visa to enter the US
- Upon arriving in Portland, check-in with the Maitripa College administrative office, bringing your passport, I-94, and I-20 documents.
- Receive information from our Administrative Office about your F-1 legal obligations
- You are responsible for maintaining your status and ensuring that you are able to complete your coursework

#### YOUR RESPONSIBILITY

Maitripa College reports information to the Department of Homeland Security on a regular basis, but you are responsible for understanding your status, ensuring that you are in compliance with all laws, and maintaining your immigration status.

#### SEVIS DESIGNATED SCHOOL OFFICIALS

- Linda Brown, PDSO ([registrar@maitripa.org](mailto:registrar@maitripa.org))
- Tiffany Patrella, DSO ([studentservices@maitripa.org](mailto:studentservices@maitripa.org))

#### RESOURCES

- How to Navigate the US Immigration System: <http://www.ice.gov/sevis/students/#>
- Study in the States: <https://studyinthestates.dhs.gov/students>

# TUITION, FEES, AND FINANCIAL AID

---

## TUITION AND FEE SCHEDULE

Maitripa College is committed to keeping our programs accessible to every student who wishes to study here. To that end tuition is considerably less expensive than comparable, private, graduate programs in the United States. Additionally, we make every effort to consider the financial concerns of each student and to support their progress to graduation through a commitment to flexible payment options and scholarship opportunities.

Tuition will be charged by the credit hour for instruction during an academic semester. No student is obligated to pay for tuition charges for a term that has not commenced if the student withdrew, or for a term that was truncated by cessation of school services.

The tuition and fees for the upcoming academic year reflect a standard, cost of living increase in tuition and the new fee schedule based on increased expenses per student for the upcoming year. Please see descriptions on each of the fee charges below.

## TUITION AND FEE SCHEDULE FOR 2026-2027

Tuition and fees are billed at the time of registration and due on the first day of class. If you opt-in to a payment plan, the payment plan must be in place and the first payment submitted on the first day of class or a late fee, as detailed below, will be added to your account.

- Tuition for 2026-2027 Academic Year: \$494/credit
- Student fees for 2026-2027 Academic Year: \$150/semester or term

A term student fee of \$150 is charged each semester and covers registration, technology, library, student services, and building costs. This fee is non-refundable upon withdrawal, as the costs it covers are incurred at the commencement of the term.

Maitripa College will maintain fees that are fair and uniformly applied to all students. Maitripa College will not change the fee policy during an academic year and will announce possible changes previous to the registration period before the start of a new academic year. All fees are non-refundable.

## ANNUAL ESTIMATED COSTS FOR 2026-2027

For degree-seeking students, the estimated cost of attending Maitripa College during the 2026-2027 academic year is based on seven credits per semester and three credits in the summer.

\$ 8,398 Tuition

\$ 450 Fees

\$ 8,848

Tuition does not include the degree application fee, room, board, books, medical insurance, retreat costs, pilgrimage costs, or any other costs except tuition. Maitripa College reserves the right to adjust tuition costs on a yearly basis at the discretion of the Board of Trustees.

## PAYMENT PLANS

Students who choose to enroll in a payment plan must be enrolled and submit their first payment on or before the first day of class. Once a payment plan has been agreed upon, students can either submit payment on the due date via check or credit card, or complete an Automatic Withdraw Form. Late fees will automatically be charged to the student account for late tuition payments, as per the below.

#### PAYMENT PLAN SCHEDULE

Below is a sample payment options using an annual tuition of \$8,848 (17 credits) as an example. These amounts are based on credits/semester and actual plans may differ slightly. Exact amounts adjust slightly in future years in accordance with published tuition rates.

##### Monthly

- Sept-Dec (7 credits): \$902/month (Fall Semester)
- Jan-April (7 credits): \$902/month (Spring Semester)
- May-July (3 credits): \$544/month (Summer Term)

#### REFUND SCHEDULE

After classes begin for a term, a student who drops a course(s) is eligible for a partial refund through the middle week of the term. Refunds shall be based on unused instructional time and shall be prorated as stated below. Refund rates shall not be differentiated on the criteria of a student's source of income or loan repayment obligations except as otherwise required by law. In calculating a refund, we will take into account the terms of a student's tuition scholarship, if any has been awarded. Students who enroll and pay but do not attend the first course meeting or engage with any course materials will receive a full refund of all tuition and fees upon confirmation of non-attendance.

Week class(es) dropped	Amount of Refund
Week 1	93.75% of tuition refunded
Week 2	87.5% of tuition refunded
Week 3	81.25% of tuition refunded
Week 4	75% of tuition refunded
Week 5	68.75% of tuition refunded
Week 6	62.5% of tuition refunded
Week 7	56.25% of tuition refunded
Week 8	50% of tuition refunded

No refund will be issued after the 8<sup>th</sup> week of the semester

#### SERVICE CHARGES AND HOLDS

A service charge of \$15 per enrolled credit will be added to an account on the day after tuition is due. Every 30 days that tuition remains outstanding, a \$15 service charge per enrolled credit will be added to the account. The service charge will continue to accrue on past due accounts on a monthly basis until the amount is paid in full.

## HELD TRANSCRIPTS AND REGISTRATION FOR PAST DUE ACCOUNTS

A student will not be able to register for classes for the next semester until their account is balanced.

## TUITION DISCOUNTS

### ALUMNI

Graduates of a Maitripa degree program may take classes as a continuing education student at Maitripa College with a 100% tuition reduction, per class, in recognition of the work they've already accomplished at Maitripa, as well as the vital role they play in our community. This discount is only available to those who have fully completed all requirements for graduation, including a culminating thesis, exam, or final project.

### STUDENTS AGED 60 AND OLDER

Maitripa students who are sixty years or older at the time of registration qualify for a 10% tuition reduction per class.

### FPMT

Partial or full tuition waivers may be available to a limited number of students per year based on employment with FPMT. Please see financial office for details.

## FINANCIAL AID

There is currently no state or federal financial aid available to Maitripa College students. Private financial aid may be available from private lenders.

## SCHOLARSHIPS

### MONASTIC SCHOLARSHIPS

To be considered for Maitripa College institutional scholarships, students must meet the following criteria by the scholarship application deadline:

- Be admitted into a Degree Program
- Have a cumulative 3.5 GPA (returning students only)

Monastic Scholarships are awarded to graduate students who are ordained as a monk or nun of any religious order. Typically, students hold the scholarship until the student graduates; award amounts are based on each student's registered credit hours.

No living expenses or stipends are covered so all applicants must have a means to cover those expenses. The scholarship is renewable, but subject to review of English language skills and GPA. Graduate students must maintain a cumulative GPA of 3.5 to retain academic eligibility for this award.

Part of the application process asks you to describe the nature of your monastic commitments or vows and the duration of your monastic commitment. Preference is given to applicants who have chosen monasticism as a lifelong path and whose commitments or vows include restrictions on financial income (i.e. vows of poverty or the like.)

A review panel may take necessary steps towards verifying the applicant's qualification and shall decide on the amount of scholarship awarded according to funding availability as well as application's qualification. Prior recipients of this Monastic Scholarship may also apply by filling out a new application form and submitting a new essay.

#### TUITION AND FEES FOR CREDIT TRANSFERRED, ATTEMPTED, OR EARNED BY FINAL MASTERY DEMONSTRATION, INTERNSHIP, OR INDEPENDENT STUDY

Tuition or fees for credit transferred, for credit attempted or earned by examination or portfolio or other irregular credit structure is based on the cost of service to administer such credits. This may be less than the cost of regular instruction, depending on evaluation, participation, supervision, and administration by Maitripa College faculty and registrar. As part of the degree program, students can expect one or more of the following may meet these standards: required demonstration of final mastery project, clinical pastoral education, internship or field education, or independent study course. Tuition and fees are outlined for each, below.

#### CLINICAL PASTORAL EDUCATION

One CPE unit is 400 hours and appears on transcripts as six transfer credits.

Student application fee and tuition are paid directly to the accredited institution awarding CPE units.

Upon completion, CPE evaluation is submitted to Maitripa College

A flat fee of \$100 is charged for processing transcripts.

#### SC800 FIELD EDUCATION

Field Education Placement is a structured internship co-created by the host organization and Maitripa College. Credit is variable.

Field placement is supervised by the site supervisor.

Fees are dependent on credits earned and faculty/administrative time.

#### INDEPENDENT STUDY COURSES

Students may propose Independent Study course to Maitripa College faculty and the Director of Academic Programs. Proposal forms are available from the Registrar. Students can expect review of proposals to consider hours per term of total student effort, instructional contact hours, rigor of learning objectives and assessment tools, and student produced learning artifacts and evaluation criteria, in determining the number of credit hours which may be earned as well as the availability of faculty for instruction and/or supervision.

#### SRV800 INDEPENDENT STUDY IN COMMUNITY SERVICE (1-2 CREDITS)

The Independent Study in Community Service is created and supervised by Maitripa College Faculty. They are of two types: instructional and oversight.

1. Oversight by Maitripa College faculty. Student proposes to participate in an external course or learning activity of scholarly merit with relevance to degree curricula, the learning objectives of which are reviewed, supplemented, and assessed by College

faculty. Tuition is charged at a flat fee of \$250/per credit; ineligible for scholarship funding.

2. Instructional Independent Study with Faculty Member. Student(s) propose to study a topic with a faculty member who has expertise in the field and/or capacity to instruct, mentor, and support the pedagogical needs of a student seeking credit for curricula-relevant work for which there is no catalog offering. Tuition is charged at the standard tuition rate per credit.

#### FINAL MASTERY DEGREE REQUIREMENT

##### ARP603 Action Research Project Extension

This course is required of MA/MDiv students who have successfully completed all coursework toward their degree with the exception of their final degree requirement. Students must register for ARP603 to maintain residency in their program for each term that their final project is in process toward submission and approval. Students are strongly advised to meet with their academic advisor in regard to staying in compliance with policies on degree completion. Prerequisite: ARP601/602 Action Research Project.

Fee charged at \$250 flat fee, audit, no credit.

# ACADEMIC PROGRAMS

---

## OVERVIEW OF ACADEMIC OFFERINGS

Maitripa College currently offers two degree programs: the Master of Arts in Buddhist Studies (MA – 44 credits) and the Master of Divinity (MDiv – 72 credits). Our programs are particularly geared toward students seeking an in-depth and critical understanding of Buddhist thought in the context of both traditional and academic scholarship, coupled with contemplative experience of the Buddhist path, and yet is open to students of any faith and academic backgrounds.

The curricula are designed according to our Three Pillars: Scholarship, Meditation, and Service. Maitripa College curricula uniquely integrate these through rigorous academic study, contemplative practice, and community service requirements, to offer a graduate level education grounded in Buddhist thought that can serve as a basis for students' active engagement in and benefit to society.

## PROGRAM LEARNING OUTCOMES

Maitripa College constructs courses, course offerings, and degree program curricula in accordance with program learning outcomes (PLO) that reflect our unique contemplative educational model. Integrating scholarship, meditation, and service happens through learning opportunities that build knowledge, praxis, and habits of mind. On the basis of the College's founding PLOs, research on the changing landscapes of professional fields, religious organizations, and higher education, and assessment of the current opportunities and strengths of the College, the PLOs have been refined and expanded. They will continue to undergo periodic review.

Classes at Maitripa are taught at the graduate level. They can entail a combination of study of the great texts of Buddhist philosophy based on the structure of the lamrim (Gradual Path to Enlightenment), Tibetan language study, meditation practice, and service as part of a unique curriculum. The degree programs were designed by Yangsi Rinpoche to guide western students to both the intellectual understanding and personal realization of insights of Tibetan Buddhism. The programs provide a comprehensive, integrative, graduate-level education in Buddhist thought that integrates traditional scholarship with the tools and methods of western academic training, to be utilized in the modern world.

## STUDENT CATEGORIES

### DEGREE STUDENTS

Maitripa College degree programs are composed of required and elective courses, based on a credit hour system. Students can expect to commit to a minimum of two hours of reading and homework a week per hour of classroom instruction, or credit hour.

The College runs on a semester schedule from late August/early September to December (Fall semester) and January to May (Spring semester), with a summer term from May through July.

### CONTINUING EDUCATION STUDENTS

- Non-degree students who enroll in courses for academic credit.

- They receive a grade, transcript, and credit hours for successfully completed courses.
- Continuing Education Students are expected to meet the same academic standards as degree-seeking students and must complete all required readings, assignments, examinations, and other course requirements.

#### AUDITORS

- Students who enroll in a course without academic credit.
- Auditors do not receive a grade, transcript, or graduate credit for audited courses.

#### CONTINUING EDUCATION STUDENTS AND AUDITORS

The Continuing Education option is intended for students who are not enrolled in a degree program but wish to pursue graduate level study for personal enrichment, professional development, spiritual formation, or focused study in Buddhism or a related subject area. Enrollment as a Continuing Education Student allows participation in Maitripa College courses without commitment to a program leading to a graduate degree.

Enrollment of Continuing Education Students and Auditors is subject to course availability and space remaining after enrollment needs of degree-seeking students have been met. Maitripa College reserves the right to limit non-degree enrollment in particular courses.

Students who later wish to pursue a degree program must complete the full admissions process and satisfy all admissions requirements in effect at the time of application. Enrollment as a Continuing Education Student does not constitute admission to a degree program.

#### MASTER OF ARTS IN BUDDHIST STUDIES (MA, 44 CREDITS)

##### DEGREE REQUIRED COURSES

Maitripa College faculty and staff are committed to periodic review and revision of this curriculum in light of new findings and methods in the fields of study, feedback from alumni and professionals, and faculty expertise. Maitripa College does not guarantee all courses will be offered as listed in the coming years. An individual student's course of study will vary according to concentrations, language studies, pace of study, and elective options. For more information, please see your academic advisor or contact us at [program@maitripa.org](mailto:program@maitripa.org).

On average, students who register for six credits or more a semester can complete the 44-credit Master of Arts in Buddhist Studies three years, if taken consecutively. Our students who register for between one and six credits per semester are permitted to complete the Master of Arts in Buddhist Studies within five years. The fastest the degree can be completed is in two years, comprised of ten credits per fall and spring semester and four to six credits for one summer; this workload, particularly balanced with other life commitments, is challenging for most students. Maitripa College will endeavor to support students pursuing an expedited timeline but does not guarantee courses offered according to curriculum design or credit hours in total can be offered within every two-year period. All students are strongly advised to work closely with their academic advisors to plan their progress to graduation based on the below curriculum requirements. Please refer to the Degree Audit in Populi and your Advisor for the most up to date versions of the below course groupings, or the set requisite for your cohort.

## SCHOLARSHIP PILLAR COURSE GROUPINGS

Required: 6 courses (12 credits)

PHL301	Introduction to Buddhist Thought
PHL302	Foundations of Buddhist Thought: The Medium and Great Scope
PHL303	Madhyamaka Philosophy: Where is the Middle Way? <i>OR</i>
PHL304	Madhyamaka Philosophy: A Dose of Emptiness <i>OR</i>
HIS301	History of Buddhist Thought in India and Tibet
PHL450	Theories and Methods in Buddhist Studies

Required: 2 courses (4 credits)

PHL404	Fundamentals of the Vajra Vehicle
THL410	Buddhist Rituals, Ethics, Services, and Ceremonies
THL320	Contemporary Buddhist Thought and Theology
THL305	Socially Engaged Buddhism

## MEDITATION PILLAR COURSE GROUP

Required: 4 courses (8 credits)

MDT301	Introduction to Buddhist Meditation
MDT302	Techniques of Buddhist Meditation: The Medium and Great Scope
MDT303	Techniques of Meditation: Madhyamaka <i>OR</i>
MDT304	Madhyamaka Meditation: Preparation for Vajrayana <i>OR</i>

## SERVICE PILLAR COURSE GROUP

Required: 4 courses (8 credits)

CS301	Foundations of Buddhist Service
CS302	Finding Your Voice: Communication and Context
CS303	Chaplaincy and Models of Spiritual Care
CS304	Servant Leadership in Buddhist/Spiritual Communities

## FINAL MASTERY DEGREE REQUIREMENT

Required: 4 credits

ARP502	Action Research Project I (2 credits) <i>AND</i>
ARP504	Action Research Project II (2 credits) <i>OR</i>
PHL500	Masters Thesis /Comprehensive Exam (4 credits)

## OPTION TIBETAN TRACK: CLASSICAL TIBETAN LANGUAGE COURSE GROUP

Required: 2 courses (4 credits)

Graduate students in the Tibetan Track MA program are required to complete a minimum of four credits in Classical Tibetan language on-site at Maitripa College; the exact courses to meet the minimum may vary depending on prior study or availability of the student for summer enrollment. Students with interest in doctoral studies, translation, and practice and philosophic texts are encouraged to take as many credit hours as possible, with both Western and Tibetan teachers.

TIB101	Introduction to Classical Tibetan Language I	(2)
TIB102	Introduction to Classical Tibetan Language II	(2)
TIB108	Classical Tibetan Course Summer Intensive	(4)
TIB201	Intermediate Classical Tibetan Language I	(2)
TIB202	Intermediate Classical Tibetan Language II	(2)
TIB301r	Seminar in Tibetan Translation	(2)

#### OPTION EDUCATION TRACK: CONTEMPLATIVE EDUCATION COURSE GROUP

Required: two courses (4 credits)

Graduate students in the Education Track MA program are required to complete a minimum of four credits in Education on-site at Maitripa College. Key components of the curriculum include:

- Foundations of Buddhist Studies
- Foundations of Buddhist Meditation and Contemplative Practices
- Stages of Human Development: Learning, Teaching, and Faith
- Educational Theory and Practice
- Buddhist Ethics and Values
- Instructional Strategies and Models
- Curriculum Development
- Educational Leadership
- Research in Education

ED310 Stages of Human Development: Learning, Teaching, and Faith (2)

#### GENERAL ELECTIVES AND CURRICULAR PLANNING

Students may select non-required courses from the catalog and new courses as they are offered to build specific competencies or concentrations of study according to their educational interests and goals. Students are advised to consider both breadth and depth of training, as well as requirements or expectations for post-graduate needs. The number of total electives is variable, and students are advised to generate an individual plan with their advisors.

#### MASTER OF DIVINITY DEGREE (MDIV, 72 CREDITS)

Maitripa College faculty and staff are committed to periodic review and revision of this curriculum in light of new findings and methods in the fields of study, feedback from alumni and professionals, and faculty expertise. Maitripa College does not guarantee all courses will be offered as listed in the coming years. An individual student's course of study will vary according to concentrations, language studies, pace of study, and elective options. Students should meet regularly with Academic Advisors and track their degree progression in Populi's Degree Audit. For more information, please contact Leigh Miller ([program@maitripa.org](mailto:program@maitripa.org)).

On average, students who register for seven credits or more a semester complete the 72-credit Master of Divinity in four years, if taken consecutively. Our students who register for between one and six credits per semester complete the Master of Divinity in an average of approximately six years and are permitted to take up to seven years at most to complete their degrees. The fastest the degree can be completed is in three years, comprised of ten credits per fall and spring

semester and six credits each for two summers (the six-credit summer Classical Tibetan Language Intensive and either a six-credit Field Education placement (internship) or six-credit (transfer) Clinical Pastoral Education (CPE) unit). This workload, particularly balanced with other life commitments, is challenging for most students. On average, MDiv students take three to five years to complete their degree. Maitripa College will endeavor to support students pursuing an expedited timeline but does not guarantee courses offered according to curriculum design or credit hours in total can be offered within every three year period. All students are strongly advised to work closely with their academic advisors to plan their progress to graduation. Most students enroll for a mix of high- and lower- credit load terms in the course of their degree. All students are strongly advised to work closely with their academic advisors to plan their progress to graduation based on the below curriculum requirements. Please refer to the Degree Audit in Populi and your Advisor for the most up to date versions of the below course groupings, or the set requisite for your cohort.

#### SCHOLARSHIP PILLAR COURSE GROUPINGS

##### Buddhist Philosophy, Tenets, and Sacred Texts Core

Required: 4 courses (8 credits)

PHL301	Introduction to Buddhist Thought
PHL302	Foundations of Buddhist Thought: The Medium and Great Scope
PHL303	Madhyamaka Philosophy: Where is the Middle Way?
PHL304	Madhyamaka Philosophy: A Dose of Emptiness

##### Buddhist Philosophy, Tenets, and Sacred Texts Electives

Required: 2 courses (4 credits)

PHL307	Madhyamaka Buddhist Philosophy: India to Tibet
PHL308	Mahamudra: Realizing the Nature of Mind
PHL326	Foundations of Mind Training: Lojong and Your Community
PHL328	Advanced Mind Training and Service as Spiritual Practice II
PHL403	Introduction to Tantra
PHL404	Fundamentals of the Vajra Vehicle
PHL412	Tibetan Medicine: The Wind Element
PHL414	Tibetan Medicine II: The Wind Element – Mental & Physical Healing in Daily Life

##### The History of Buddhist Thought and the Study of Religions Core

Required: 2 courses (4 credits)

HIS301	History of Buddhist Thought in India and Tibet
PHL450	Theories and Methods in Buddhist Studies

##### The History of Buddhist Thought and the Study of Religions Electives

Required: 1 course (2 credits)

THL325	Understanding World Religions
THL327	Birth, Aging, Sickness, & Death in Comparative Theology & Religion
THL328	Approaches to the Study of Religion: Theory, Belief, and Practice
THL330	Mapping the Landscape of Western Spirituality: Comparative Religious Traditions in Theory & Practice

## MEDITATION PILLAR COURSE GROUP

### Contemplative Practice and Spiritual Formation Core

Required: 4 courses (8 credits)

MDT301	Introduction to Buddhist Meditation
MDT302	Techniques of Buddhist Meditation: The Medium and Great Scope
MDT303	Techniques of Meditation: Madhyamaka
MDT304	Madhyamaka Meditation: Preparation for Vajrayana

### Contemplative Practice and Spiritual Formation Electives

Required: 1 course (2 credits)

MDT307	Madhyamaka Buddhist Meditation: Lineage of India into Tibet
MDT308	Techniques of Meditation: Mahamudra
MDT334	Meditations on Emptiness
THL324	Self-Compassion for Buddhists (1 credit)
THL338	Insight Dialogue: Interpersonal Meditation (1 credit)

## SERVICE PILLAR COURSE GROUPS

### Contemporary Buddhist Thought and Ethics Core

Required: 2 courses (4 credits)

CS301	Foundations of Buddhist Service
CS302	Finding Your voice: Communication and Context

### Contemporary Buddhist Thought and Ethics Electives

Required: 2 courses (4 credits)

HIS325	The History and Culture of Buddhist Tibet
THL305	Engaged Buddhism
THL320	Contemporary Buddhist Thought and Theology
THL416	Systematic Suffering and Collective Liberation
THL417	Making the Invisible, Visible: Working with Unhealthy Bias and Uprooting It
THL438	Women in Buddhism

### Spiritual Care and Buddhist Ministry Core

Required: 2 courses (4 credits)

CS303	Chaplaincy and Models of Spiritual Care
CS304	Servant Leadership in Buddhist/Spiritual Communities

### Spiritual Care and Buddhist Ministry Electives

Required: 4 courses (8 credits)

ED310	Buddhist Education - Stages of Human Development: Learning, Teaching, and Faith
THL337	Empathy, Listening, and Mindful Compassionate Dialogue
THL339	Mindful Compassionate Dialogue
THL370	Seminar in Buddhist Ministry, Practical/Pastoral Theology, and Spiritual Care: Spiritual Reflection and Meaning

THL410	Buddhist Rituals, Ethics, Services, and Ceremonies
THL412	Buddhist Rituals and Ceremonies for Healing
THL423	Spiritual Care in Practice
THL424	A Good Death: Approaching End of Life
THL425	Death, Loss, Grieving, and Healing: Personal and Community Processes
THL428	Family Systems and Group Process

#### FIELD EDUCATION PLACEMENT AND/OR CLINICAL PASTORAL EDUCATION

Required: 6 credits

CS500	Field Education Placement (internship, credit variable)
CPE	Clinical Pastoral Education (CPE, 6 transfer credits)

#### FINAL MASTERY DEGREE REQUIREMENT

Required: 4 credits

ARP502	Action Research Project I (2 credits)
ARP504	Action Research Project II (2 credits)

#### GENERAL ELECTIVES AND CURRICULAR PLANNING

Students may select non-required courses from the catalog and new courses as they are offered to build specific competencies or concentrations of study according to their educational interests and goals. Students are advised to consider both breadth and depth of training, as well as requirements or expectations for post-graduate needs. The courses listed above are 2 credits each unless otherwise indicated. Number of total electives is variable, and students are advised to generate an individual plan with their advisors.

## COURSE DESCRIPTIONS

---

This course list describes courses that have been offered at Maitripa College between 2019-2026. Maitripa College faculty and staff are committed to periodic review and revision of degree curricula in light of new findings and methods in the fields of study, feedback from alumni and professionals, and faculty expertise. These courses are not guaranteed to be offered in the future, and new courses may be developed in 2026 and beyond. Please see our website for a listing of current courses, and the online catalog for our active catalog.

### ACTION RESEARCH PROJECT (ARP)

#### **ARP502 Action Research Project – I (2 credits)**

MA and MDiv students' final degree requirement, to be determined in consultation with their academic advisors, may be the completion of an MA exam, thesis, MDiv comprehensive paper, or the action research project, for students commencing their degree prior to August 2020. All current degree students are strongly encouraged to enroll in ARP502 (second semester) or ARP504 (4th semester or above) in Spring 2020 to work towards completion of their individual final degree requirements within a cohort and faculty supported structure. For incoming students starting 2020-2021, the ARP will be the default final degree requirement, unless other compelling reasons are approved for an exam or a traditional thesis alternative. The ARP course may meet for four, day-long working class sessions, once a month, February-May. The total credits for the ARP project are four for MA students, divided over two spring terms, and may be up to six credits for MDiv students, depending upon the project scope.

The Action Research Project is a form of integrative and collaborative research, reflection, and writing. Students chose a principal question and work with faculty mentors to design a research project. ARP502 students will identify their research question, identify their positionality, build a literature review, understand research ethics standards and write consent forms or other ethics documents as needed, explore research methods and describe their selected tools and methodologies, and write a research proposal. The course is successfully completed upon the approval by a committee of their proposal. Research plans should be then implemented between the proposal approval and enrollment in ARP504, usually at least six months.

#### **ARP504 Action Research Project – II (2 credits)**

Building upon ARP502, students who have implemented their approved Action Research Project proposal and successfully gathered significant data enroll in ARP504 to complete their Action Research Project. In this term, students will learn to analyze their data, organize their thinking for audiences, produce a written, formal paper of their findings, and present their research to the community.

### COMMUNITY SERVICE (CS)

#### **CS008 Independent Study in Community Service**

#### **CS301 Foundations of Buddhist Service (2 credits)**

This course is an introduction to the service core at Maitripa College for all students, focusing on understanding and developing a Personal Theology both within and outside of the Buddhist tradition, understanding the concept of spiritual transformation through service, and developing

an understanding of “suffering” in the context of a Buddhist worldview This course includes a 15-hour concurrent service-learning project.

### **CS302 Finding Your Voice: Communication and Contexts (2 credits)**

This is the second course in the service pillar at Maitripa College, which builds on the foundation of the first term, exploring concepts and practicalities related to identifying and expressing yourself as a spiritual leader in modern society and establishing a unique and relevant “voice.” We will explore traditional, historical, and contemporary “voices” of Spiritual Leadership, and mediums for expressing that voice, including online platforms, the Academy, spiritual communities, and others. This course includes a concurrent 15-hour service project.

### **CS303 Chaplaincy and Models of Spiritual Care (2 credits)**

Spiritual Care, or offering the arts of ministry and chaplaincy in the midst of others’ suffering, is now being done by Buddhists in a variety of secular and multi-faith contexts. Through multiple roles, institutional settings, and activities, they are integrating Buddhist religious education, personal spiritual formation, and ministerial agility into their vocation outside of Buddhist communities. This work is informed by, at times in tension with, and also beginning to influence Chaplaincy models of care. This course aims first to understand the history of chaplaincy, what chaplains actually do, chaplaincy specializations, and the paths (educational, personal, religious, and clinical) to professional chaplaincy. The course will then explore innovations and current research in the field of chaplaincy and prepare students to apply for Clinical Pastoral Education (CPE) residencies. The emergence nationally of various forms of Buddhist ministry and chaplaincy will be situated in relation to this context. Ethical codes, standards of practice, and chaplaincy competencies will be explored towards the formulation and articulation of one’s own Buddhist theology of spiritual care. Students will broaden their base of compassion and strengthen internal resources through theological reflection on how they may wish to embody arts of Buddhist spiritual care. This is the third course in the service pillar at Maitripa College and includes a concurrent service project.

### **CS304 Servant Leadership in Buddhist/Spiritual Communities (2 credits)**

This course will explore methods of servant leadership in support of Buddhist/spiritual communities, with a particular emphasis on cultivating the inner and outer qualities of skillful community ministry. Students will develop their understanding of our impact on others and increase awareness of how issues such as equity, trauma, ethics and so forth inform the ways in which we share and represent the dharma. This course will help strengthen students’ understanding and practice of compassion for others, including discussion of contemporary application of skillful means, co-constructing spiritual practice environments, facilitating group practices, religious education and pedagogy, working in relational dynamics, and integrating these pieces into one’s personal service. This is the fourth course in the service pillar at Maitripa College and includes a concurrent service project.

### **CS500 Field Education Placement (3 credits)**

The Field Education Placement is a structured internship co-created by the host organization and Maitripa College. Credit is variable.

### **CONTEMPLATIVE EDUCATION (ED)**

### **ED310 Stages of Human Development: Learning, Teaching, and Faith (2 credits)**

This course will focus on the stages of human development from the perspectives of teaching, learning, and spiritual growth. The course material will focus on theories that center the progression of physical, cognitive, emotional, social, and ethical development across the lifespan. Classical and contemporary theories of development, current research, and practical applications are integrated throughout the course, as well as contextual influences of cultural background, ethnicity, and socioeconomic status. Additionally, this course will invite students to consider stages of human development within the unique frame of Buddhist thought, including analysis through the hermeneutical frames of buddha- nature, karma, and rebirth.

## HISTORY (HIS)

### **HIS301 History of Buddhism in India and Tibet (2 credits)**

This course is a broad survey of the intellectual and cultural history of Buddhism in India and Tibet. We will begin by situating the study of Buddhism within the broader context of the study of religion. In addition to examining the core philosophical and intellectual aspects of Buddhism, we will consider its social and historical dimensions, beginning with its inception and growth in India through its flourishing in Tibet. We will begin by considering Buddhism's early emergence (ca. 2500 BCE), with a brief overview of the Vedic and Brahmanical traditions that preceded classical Hinduism and Buddhism. We will then examine core Buddhist concepts, such as the three jewels, the four noble truths, rebirth, and karma, and the formation of early Indian Buddhist schools (mainstream, *Nikāya*, or *Theravāda*). We will then look at the development of the *Mahāyāna* schools, their principal doctrines, and debates between them and earlier Buddhist schools. We will read writings by some key *Mahāyāna* figures, including *Nāgārjuna*, *Śāntideva*, and Vasubandhu and discuss the tenets of the Middle Way (*Madhyamaka*) and Mind-Only (*Cittamatra*) schools. We will then discuss the rise of tantric Buddhism (*Mantrayāna* or *Vajrayāna*), considering some of its key doctrines, texts, and practices, as well as its relation to the non-tantric *Buddhist* schools. We will then examine the transmission of Buddhism from India to Tibet, tracing its development from the earlier transmission (*ngadar*), during the Imperial Period (seventh century on), through the later transmission (*chidar*) in the eleventh century. We will discuss the relationship between Buddhism and the native Bön religion, before looking at key points in the historical development of the main Tibetan Buddhist schools: the Nyingma, Kadam, Kagyu, Sakya, and *Geluk*. We will learn about the principal figures of these schools, including Padmasambhava, Atiśa, Marpa, Milarepa, Tsongkhapa, the Dalai Lamas, and Sakya Paṇḍita, as well as their key doctrines, philosophical views, and practices. We will supplement these discussions by considering the social, historical, and political factors that shaped the trajectory of Tibetan Buddhism. In the final part of the course, we will discuss the state of Tibetan Buddhism in the twentieth century and beyond, including its spread to the West, some of the key figures involved in this transmission, and the challenges and controversies that have arisen with regard to it.

### **HIS317 Buddha: Stories, Songs, Theories, Devotion (1 credit)**

Buddha, “the awakened,” is the ideal being – and state of being – in all Buddhist traditions. This course will explore the contours of the Buddha-ideal as revealed in legendary narratives, devotional poems, ritual texts, visionary accounts, philosophical treatises, meditation manuals, and artistic representations. We will consider both classical conceptions of Buddha and modern reinterpretations. In doing so, we will trace “Buddha” from the historical Shakyamuni’s

biography to Mahayana metaphysics, the arts and devotional practices, and into our contemporary social and cultural contexts.

### **HIS325 The History and Culture of Buddhist Tibet (2 credits)**

This introduction to the history and culture of modern and contemporary Tibet will deepen students' appreciation for the many changes the Tibetan people have navigated in the past one hundred years to reveal a complex society which has achieved remarkable cultural and religious sustainability balancing tradition and innovation.

To illumine historical upheavals and resiliency, we will engage with autobiographical and fictional literature, documentary and narrative films, historical primary sources, Buddhist and secular contemporary music and art, poetry, modern monastic Buddhist education and pilgrimage, and how Tibetan Buddhists relate their religion to everyday lives, seeking, as much as possible, Tibetan representation of Tibetan lives in all their diversity and what contributes to a shared sense of Tibetan identity among them. Students will learn an interdisciplinary approach to the study of a unique region, highlighting the interactions of Tibetan communities with others globally and Tibetan visions for their and human futures together. A few select film screenings and book discussions will be open to the community. This course's emphasis on an interdisciplinary approach to Tibetan Buddhist civilization will also provide context for a spring in a course on Himalayan Art and Holy Objects, but the fall course will not be a prerequisite.

### **MEDITATION (MDT)**

#### **MDT301 Introduction to Buddhist Meditation (2 credits)**

This course will provide a broad introduction to the vast corpus of techniques and practices of Buddhist meditation, with particular emphasis on the techniques of analytical meditation. The course will be taught in an interactive format, allowing students the opportunity to learn specific meditations as directed by the instructor, practice them, and discuss their experiences in class. The subject matter will parallel the topics of Buddhist philosophy as taught in PHL301. Part of this class will include regular meditation sessions out of class, the keeping of a sitting journal, and the opportunity for objective discussion on the effect of these practices on the individual's mind. If desired, the committed student will have the opportunity to work with the instructor to design a personal meditation practice.

#### **MDT302 Techniques of Buddhist Meditation: The Medium and Great Scope (2 credits)**

This course will continue with instruction in meditation based on the foundations established in MDT 301. The course will be taught in an interactive format, allowing students the opportunity to learn specific meditations as directed by the instructor, practice them, and discuss their experiences in class. The subject matter will parallel the topics of Buddhist philosophy as taught in as taught in PHL302. Part of this course will include regular meditation sessions out of class, the keeping of a sitting journal, and the opportunity for objective discussion on the effect of these practices on the individual's mind. If desired, the committed student will have the opportunity to work with the instructor to design a personal meditation practice.

#### **MDT303 Techniques of Meditation: Madhyamaka (2 credits)**

The subject matter of this course will parallel the topics of Buddhist philosophy as taught in PHL303. The course will be taught in an interactive format, allowing students the opportunity to learn specific meditations as directed by the instructor, practice them, and discuss their

experiences in class. Part of this course will include regular meditation sessions out of class, the keeping of a sitting journal, and the opportunity for objective discussion on the effect of these practices on the individual's mind. If desired, the committed student will have the opportunity to work with the instructor to design a personal meditation practice.

#### **MDT304 Madhyamaka Meditation: Preparation for Vajrayana (2 credits)**

The subject matter of this course will parallel the topics of Buddhist philosophy as taught in as taught in PHL304. The course will be taught in an interactive format, allowing students the opportunity to learn specific meditations as directed by the instructor, practice them, and discuss their experiences in class. Part of this course will include regular meditation sessions out of class, the keeping of a sitting journal, and the opportunity for objective discussion on the effect of these practices on the individual's mind. If desired, the committed student will have the opportunity to work with the instructor to design a personal meditation practice.

#### **MDT307 Madhyamaka Buddhist Meditation: Lineage of India into Tibet (2 credits)**

This course will connect students with the wisdom lineage of the Madhyamaka teachings beginning in India and moving into Tibet and introduce them to the living forms of meditation practice unique to and refined within the Tibetan tradition over centuries. Through a combination of explanation and guided practice instruction, this course will serve as an experiential introduction to meditation on the Middle Way. Advanced Standing students only.

#### **MDT308 Techniques of Meditation: Mahamudra (2 credits)**

This course will continue with instruction in meditation based on the practices established in MDT 303 (fall semester), with a focus on deepening *Shiné* (calm abiding) and practicing *mahamudra* instructions for realizing conventional and ultimate natures of mind. The subject matter will parallel the topics of Buddhist philosophy as taught in as taught in PHL307. The course will be taught in an interactive format, allowing students the opportunity to learn specific meditations as directed by the instructor, practice them, and discuss their experiences in class. Part of this course will include regular meditation sessions out of class, the keeping of a sitting journal, and the opportunity for objective discussion on the effect of these practices on the individual's mind. If desired, the committed student will have the opportunity to work with the instructor to design a personal meditation practice. This course meets degree requirements as the equivalent of MDT304: Madhyamaka Meditation: Preparation for Vajrayana

#### **MDT334 Meditations on Emptiness II (2 credits)**

The heart of Buddhist practice is meditation on emptiness, a rigorous contemplative approach towards gaining deep insight into the nature of reality with the goal of attaining liberation for the benefit of oneself and others. In this class, we will explore some of the traditional approaches to meditation on emptiness from the Tibetan Buddhist tradition, both in terms of the instructions on the practices in some classic texts and by some realized authors (including Shantideva, Tsongkhapa, and the Buddha himself), and in terms of becoming familiar with the meditations themselves.

#### **MDT335 Meditation on the Nature of Reality: How Things Appear and How They Exist (2 credits)**

In this class, you will be guided in meditation on views of the ultimate nature of reality and, ultimately, be introduced to the view of emptiness in accordance with Tibetan Buddhist thought.

In accordance with the tradition, this view entails the negation of an “inherent” existence of self and phenomena, with care taken to ensure that conventional existence is established and protected, and that “emptiness” does not mean “nothingness.” In this class, you will learn how to meditate on the correct view of emptiness through the cultivation of wisdom which is the union of calm-abiding and insight as taught in the major Buddhist traditions, and how to apply such meditation, in combination with the altruistic intention of bodhicitta, in your everyday life, and, ultimately, to the complete eradication of all obscurations and to full enlightenment.

### **MDT412 Techniques of Meditation: The Mind and Wind**

According to the Tibetan Medical tantras, the Wind element (*rLung-spyi*) is the breath, life force, and energy of the body and mind. It is pervasive and circulates inside and outside of the body. It is the source of respiration, movement, strength, and the power of the body and mind. It especially governs the main function of the mind, and for this reason, is considered particularly important and impactful in Buddhist practice which holds the relationship with mind and the experience reality that results from such as paramount. Most importantly, in the context of this class, is the relationship between the wind and the mind (*sems*), and the understanding of how working with one affects the other. For this reason, this course is being offered in conjunction with PHL412. These courses should be taken together.

### PHILOSOPHY (PHL)

#### **PHL301 Introduction to Buddhist Thought (2 credits)**

This course will make use of philosophical treatises, literature, and historical analysis to present the foundations of Buddhist philosophy as taught by the early Indian pandits and commented upon by Tibetan scholars. Readings will include selections from the *Abhidharma Kosha*, *Pramanavarttika*, and *Abhisamayalamkara*, with particular focus on the readings that relate to the three scopes of the lamrim as presented by the Tibetan scholar Je Tsongkhapa. Students will come away from this course with a foundation in Buddhist philosophy and knowledge of key issues of Buddhist Studies, including personal identity and the five skandhas, subtle impermanence, and the basics of a Buddhist world view. Students will gain important grounding in basic principles of dependent arising, the structure of Buddhist logic, and familiarity with Buddhist logic and logical arguments.

#### **PHL302 Foundations of Buddhist Thought: The Medium and Great Scope (2 credits)**

This course surveys the foundational philosophical ideas of the Buddhist tradition as presented by the great pandits of India and commented upon by the Tibetan inheritors of the Indian Buddhist tradition. The course will make use of philosophical treatises (primary sources in translation), literature, and historical analysis to present the foundations of Buddhist philosophy. Readings will include selections from Vasubandhu’s *Abhidharmakosha*, Dharmakirti’s *Pramanavarttika*, the *Abhisamayalamkara* (attributed to Maitreya), *Guide to the Bodhisattva's Way of Life*, and *Seventy Topics*, as well as modern scholarly analysis of the same. There will be a particular focus on the readings as they relate to the medium and great scope of the Lamrim as presented by the Tibetan scholar Je Tsongkhapa and others. Students will gain a strong foundation in Buddhist philosophy including key topics that relate to the medium and great scopes such as cause and effect, the potential for enlightenment, and the structure of existence according to the Buddhist world view. Students will gain a strong foundation in Buddhist philosophy including key topics that relate to the great scope such as loving kindness, great

compassion, and abandoning the mind of self-cherishing, as well as topics that relate to the great scope such as the mind of enlightenment, the six perfections, and an in-depth examination of the path of a bodhisattva.

### **PHL303 Madhyamaka Philosophy: Where is the Middle Way? (2 credits)**

An overview and in-depth introduction to the heart of the Tibetan Buddhist tradition, the philosophy and practice of Madhyamaka, or the “Middle Way,” as presented by the renowned Indian Buddhist philosopher Nagarjuna and his Indian and Tibetan commentators. Primary readings for this course include Lama Tsongkhapa’s *Essence of Eloquence (Lekshé Nyingpo)* and its sources. Students are strongly encouraged to enroll in MDT303 Techniques of Meditation: Madhyamaka in conjunction with this course.

### **PHL304 Madhyamaka Philosophy: A Dose of Emptiness (2 credits)**

A continuation of the Madhyamaka I course, in which the exploration and debate of the philosophy and practice of Madhyamaka, or the “Middle Way” is deepened and refined. The primary reading text for this course will be Khedrup Je’s *Dose of Emptiness (stong thun chen mo)*, a detailed critical exposition of the theory and practice of emptiness as expounded in the three major schools of Mahayana philosophy, as well as its commentaries. Students are strongly encouraged to enroll in MDT304 Madhyamaka Meditation: Preparation for Vajrayana in conjunction with this course.

### **PHL307 Madhyamaka Buddhist Philosophy: India to Tibet (2 credits)**

This course will lay the groundwork for the study of the Madhyamaka Buddhist philosophy of the Tibetans through exploring its origins and development in the Indian philosophical tradition and proceed into an introductory exploration of Madhyamaka as it was developed, taught, and practiced in Tibet. This course will examine not only Nāgārjuna's philosophy as propounded by his commentators but also the differing understandings of the philosophical tools that are appropriate to its exploration, and how this eventually took shape in the "consequentialism" of Tibet.

### **PHL308 Mahamudra: Realizing the Nature of Mind (2 credits)**

The aim of this course is to explore the Great Seal, Mahāmudrā, which in Indian and Tibetan Buddhism is the attempt to realize the conventional and ultimate nature of the mind through a combination of philosophical analysis, calm abiding meditation, and special insight meditation. Study of the function and nature of mind is considered in Indian and Tibetan Buddhist schools to be essential for understanding how to tame the mind and cultivate realizations. We will first focus on psychological and philosophical approaches to the conventional nature of the mind through such sources as Vasubandhu’s *Abhidharmakośa* and Dharmakīrti’s *Pramāṇavārttika*. Then an in-depth study of Mahāmudrā will begin with attention to the Indian sources of the Great Seal, including such figures as Saraha and Maitrīpa; proceeding to the theory and practice of Mahāmudrā as developed in Tibet among the Kagyu. Understanding the origins and development of Geluk Mahāmudrā will include close attention to the instructions for practice found in the Great Panchen Lama Losang Chökyi Gyaltzen’s root-verses on Mahāmudrā, his auto-commentary on the root-verses, and his inspired and inspiring spiritual songs. Finally, we will approach the ultimate nature of the mind through works such as the Mind-Only treatises of Vasubandhu, Candrakīrti’s *Madhyamakāvātara*, and those of selected Tibetan Buddhist masters. This course meets degree requirements as the equivalent of PHL304: A Dose of Emptiness.

### **PHL326 Foundations of Mind Training (Service as Spiritual Practice): Lojong and Your Community (2 credits)**

According to the Tibetan Buddhist tradition, the key to happiness is not the eradication of our problems but rather the development of a mind capable of transforming any problem into a cause for happiness. In this course, we will take a deep dive into the realities of the practice of *lojong*, or *thought transformation*, through the study of individual works from the *Great Collection*, an early compilation of lojong literature masterfully translated by Geshe Thupten Jinpa, Ph.D.

This class will include some traditional commentary on these texts, as well as analysis and exploration of the genre of lojong, including guidance for cultivating new mental habits for mastering our thoughts and emotions as well as contemporary treatments of lojong in the west, including approaches through popular culture, science, and in community.

### **PHL328 Advanced Mind Training and Service as Spiritual Practice II: Lojong, Calm-Abiding, and Your Community (2 credits)**

According to the Tibetan Buddhist tradition, the key to happiness is not the eradication of our problems but rather the development of a mind capable of transforming any problem into a cause for happiness. In this course, building on our exploration of the *lojong* literature and practice tradition of Tibet from the fall term, we will expand our exploration of the tradition to modern practices and applications of *lojong*, and in particular, explore ways that this tradition can serve as a basis for our interaction in the world.

This class will include some traditional commentary on these texts, as well as analysis and exploration of the genre of *lojong*, including guidance for cultivating new mental habits for mastering our thoughts and emotions as well as contemporary treatments of *lojong* in the west, including approaches through popular culture, science, and in community.

### **PHL403 Introduction to Tantra (2 credits)**

This course will give an introduction and overview to Buddhist tantra as it came through India to Tibet. We will explore its history and lineage, as well as gain an understanding of basic tantric philosophy. We will get a broad overview of the four classes of tantra, learn how to practice simple tantric methods, and explore the basis of practicing tantra, the differences between sutra and tantra, and deity yoga. In particular we will explore how the Madhyamaka understanding of reality is integrated into the tantric view, and how an individual navigates the tantric path. We will also focus on how the tantric lineage was preserved in Tibet and clarify the misunderstandings and main points of the path. The early part of the semester will focus on the philosophy, practice, and the ritual of Avalokiteshvara (nyung nye), and the latter part will focus on the more advanced practices of purifying the life, death, and intermediate stage, and transforming into the path of Enlightenment.

### **PHL404 Fundamentals of the Vajra Vehicle (2 credits)**

This course will provide students with an overview to the history, theory, and ethical practice of the tantras of the Secret Mantra Vehicle as described in the works of Tsongkhapa, founder of the Gelukpa lineage, and His Holiness the Dalai Lama. The course will present a detailed description of the four classes of tantra, the differences between sutra and tantra, and a discussion of the scriptures and historical figures central to the history of the Vajra Vehicle in Indian and Tibetan Buddhism. The course may also explore the meaning of Fundamental Mind, identify the

essential practices of emptiness and deity yogas, map the grounds and paths of Secret mantra, and consider the ramifications of tantric views and ethics in our own lives.

#### **PHL412: Introduction to Tibetan Medicine**

Tibetan Medicine (*bod kyi gso ba rig pa*, or Sowa Rigpa) is one of the oldest known traditional medicine systems in the world. It is a unique tradition based on medical knowledge from multiple ancient cultures, including India, China, Afghanistan, Persia, and the Bon tradition of Tibet, on the basis of the four medical tantras taught by Shakyamuni Buddha. The Tibetan Medical system is deeply intertwined with Buddhist thought, and holds the philosophical basis of the three poisons and the four noble truths as its framework. This course will provide an overview of Tibetan medicine with a focus on the wind element (*rlung*), which, according to this system, is one of the three principal energies of the human body, responsible for all movement internal and external to the body, from the circulation of blood to the movement of limbs. Most importantly, in the context of this class, is the relationship between the wind and the mind (*sems*), and the understanding of how working with one affects the other. For this reason, this course is being offered in conjunction with MDT412. These courses should be taken together.

#### **PHL414: Tibetan Medicine: The Wind Element**

Tibetan Medicine (*bod kyi gso ba rig pa*, or Sowa Rigpa) is one of the oldest known traditional medicine systems in the world. It is a unique tradition based on medical knowledge from multiple ancient cultures, including India, China, Afghanistan, Persia, and the Bon tradition of Tibet, on the basis of the four medical tantras taught by Shakyamuni Buddha. The Tibetan Medical system is deeply intertwined with Buddhist thought, and holds the philosophical basis of the three poisons and the four noble truths as its framework. This course will provide an overview of Tibetan medicine with a focus on the wind element (*rlung*), which, according to this system, is one of the three principal energies of the human body, responsible for all movement internal and external to the body, from the circulation of blood to the movement of limbs. Most importantly, in the context of this class, is the relationship between the wind and the mind (*sems*), and the understanding of how working with one affects the other.

#### **PHL450 Theories and Methods of Buddhist Studies (2 credits)**

This course is designed to give students the methodological and theoretical tools needed to think critically about ways to approach the academic study of Buddhism. What are the goals of Buddhist Studies? What are the best methods for achieving those goals? What sorts of presuppositions and assumptions do we bring into our work and our orientation towards "Buddhism"? Do our presuppositions and assumptions serve our goals? How do political, religious, and/or ideological preferences impact our engagement with the object of study? What are the authoritative sources for the information we want and how do we determine that? How do we understand and interpret the "data"? What sorts of responsibilities do scholars have? What we study and how we study it are inextricably tied to questions of theory and method. Those who see methodological discussions as needless academic meanderings do not somehow thereby free themselves of methodological biases. Everybody engages their object of study with a theoretical and methodological orientation. The goal of this class is to encourage students to do so consciously, to think about their own assumptions and the assumptions of the broader community of scholars who engage the Buddhist traditions within modernity and postmodernity.

#### **PHL500 Masters Thesis/Comprehensive Exam (4 credits)**

Final mastery for the MA degree is demonstrated through one of the following options. MA students with permission to complete the Exam or Thesis will register for PHL500 (and PHL501, below, for continued residency as required.)

Passing a Final, Comprehensive Exam - The comprehensive exam is an on-campus four-hour exam covering the breadth of content of the subject matter of the MA degree. A list of potential questions from which the faculty will draw are given to the students in advance for their study and preparation. The actual exam will have twelve questions from which the student will choose eight to answer in separate essays. Students will be given the list of questions at the start of the term in which they plan to take the exam, and the PHL500 course may meet during the term for review sessions.

Completion of a Master's Thesis - Under rare circumstances, with special permission, the highly motivated and extremely committed student may petition the Maitripa College MA faculty to complete a thesis project. Students propose, frame, and present drafts of the thesis in consultation with the thesis advisor. Thesis projects must be completed within 2 semesters (1 year) of all other coursework and degree requirements at Maitripa. For further details, please see the Dean of Education or Director of Programs.

## THEOLOGY (THL)

### **THL305 Engaged Buddhism: Non-Violence and Social Justice in Buddhist Thought and Practice (2 credits)**

Engaged Buddhism is the application of the Dharma to large and small scale problems that cause suffering in the world. Most commonly it is thought of as Buddhist social and political action, but can include everything from hospice care, to environmental work, to anti-war activism, to soup kitchen work, to solitary meditation in a Himalayan cave for ultimate benefit of all living beings. Socially Engaged Buddhism is not aligned with any particular Buddhist denomination and can be found across the Buddhist world. It has been more clearly defined and prominent in the past fifty years thanks to the efforts of leading engaged Buddhist thinkers like Ven. Thich Nhat Hanh, His Holiness the Dalai Lama, Sulak Sivaraksa, Samdhong Rinpoche, and Robert Thurman among others. In this course we will look at the writings of these engaged Buddhists and investigate the kinds of activities Engaged Buddhists are doing in order to transform society to create a world that engenders our highest ideals and nurtures compassion and wisdom.

### **THL320 Contemporary Buddhist Thought and Theology (2 credits)**

The work of the academic study of Buddhism by contemporary scholars has offered tremendous insights into the historical and social conditions that grounded, informed, and influenced the formation of Buddhist ideas and institutions. Yet due to the academic attempt to keep an objective and scientific distance from its object of study, such scholars, many of whom are self-identified Buddhists, have traditionally been discouraged in the academy from thinking about the normative implications of these insights for modern Buddhist communities. Recent years have seen a growth of Buddhist "theological" thinking paralleling the kind of theological thinking our monotheistic counterparts have engaged in to address similar issues in their own traditions. Buddhist scholars who are also practitioners have moved beyond simply describing the tradition from a critical distance, and begun to use the critical skills of the academy to think about the tradition and speak from within the tradition about issues of concern to themselves as members of Buddhist communities. What do Buddhists have to say about the environmental crisis? How

ought Buddhists think about the tradition's patriarchal past? What might Buddhism contribute to prison reform? How might "justice" be conceived in Buddhist terms? What does Buddhism have to contribute to hospice care? To psychology? What are the appropriate and effective Buddhist ways of thinking about these problems and questions? This course will examine the development of this new branch of Buddhist thinking including the very use of the term "theology" for a tradition without a theos (God), its theoretical grounding, and examples of its contemporary application.

### **THL324 Self-Compassion for Buddhists (1 credit, 8 weeks)**

Many Buddhists dedicate themselves to practicing kindness and compassion for others, and inadvertently leave themselves out. As His Holiness the Dalai Lama has said, "If your compassion does not include yourself, it is incomplete." In this class, we will learn to include ourselves in the circle of compassion – not above other sentient beings, but also not below.

This class is based on and draws heavily from the 8-week course in Mindful Self-Compassion (MSC) developed by Kristin Neff and Christopher Germer. In this class we will learn core principles and practices that enable students to respond to difficult moments in their lives with kindness, care and understanding. Self-Compassion can be learned by anyone and is a key ingredient in healthy self-care. MSC has been studied for over two decades, and there is now a significant field of research into compassion and self-compassion which shows that these practices are strongly associated with emotional wellbeing, lessened anxiety, depression and stress, maintenance of healthy habits such as diet and exercise, and satisfying personal relationships.

### **THL325 Understanding World Religions: Concepts of and Contributions to Justice and Peace (2 credits)**

This course offers an overview of the worldviews of various religions and ideologies and an examination of their ideas of, teachings on, and action in relationship to the concepts of justice and peace, with special attention to teachings on such issues as war and peace, violence, economic justice, the environment, criminal justice, and social justice. This course will rely upon texts and representatives of the traditions themselves to present the core material for the course. Students are required to investigate one worldview in depth through a semester-long research project.

### **THL327 Birth, Aging, Sickness, and Death in Comparative Theology and Religion (2 credits)**

Gautama Buddha famously experienced the four sights in the form of encounters with the human experiences of aging, sickness, death, and a wandering renunciate. These encounters are said to have led directly to his realization of the dissatisfactory nature of conditioned existence and, ultimately, were part of his motivation to seek realization and enlightenment. In this course, the understanding of the four sights along with an analysis of "birth" offer a frame for comparison with non-Buddhist religious traditions. During the term, we will explore how human beings have approached these basic realities of human experience and their soteriological role in the lives of the faithful. We will explore ways that doctrines and living communities create meaning, ritual, celebration, and offer solace in various theistic and non-theistic religious traditions, including some pre-Christian, Abrahamic, Asian, and Native American religious and spiritual traditions.

### **THL328 Approaches to the Study of Religion: Theory, Belief, and Practice (2 credits)**

This course will examine the ubiquitous but elusive phenomenon of religion as it is studied, lived, and practiced in its myriad forms. Whether or not we consider ourselves religious, the influence of religion on the world and on society is unavoidable: it shapes our values, beliefs, social dynamics, and even economic and political systems. At the same time, it defies easy generalizations and simple definitions.

We will first explore some of the most influential theories and critiques of religion, considering sociological, psychological, anthropological, and phenomenological approaches. We will then examine ways in which religious traditions address fundamental questions related to faith, ethics, mortality, and salvation. Finally, we will consider ways in which followers of religious traditions have historically responded and adapted to changing environmental and socio-political conditions, such as religious pluralism, radicalism, and ecological crisis.

Students will be expected to engage directly with at least one tradition that is not their own, attending a religious service in the surrounding community.

### **THL330 Mapping the Landscape of Western Spirituality: Comparative Religious Traditions in Theology and Practice (2 credits)**

This course may be offered at the discretion of the instructor, to meet the goals of expanding upon interfaith and comparative studies, increasing exposure to the diversity of beliefs, practices, and traditions in the US and our region, and developing particular sensitivity and attention to issues of religious conversion and service to a plurality of faiths or nones.

### **THL337 Empathy, Listening, and Mindful Compassionate Dialogue (2 credits)**

How do we deeply and compassionately listen to others, so they feel seen and heard, healing connection is created, and true collaboration becomes possible? How do we use empathy appropriately, and without being overcome ourselves? Empathy is a foundational skill for spiritual care givers and for healthy relationships, focused on the quality of connection we experience with ourselves and others. It is a willingness to offer curiosity and compassionate presence for another person's experience without trying to fix them, insert our own agenda, or lose our own grounding. The common misconceptions and obstacles to self-empathy and empathy for others will be clarified, as will be prevention of empathetic distress leading to burnout. The components of empathy, ways to offer empathy suitable to varying feelings and needs, and discerning what distinguishes empathy from other kinds of responses, are learnable skills which students will practice weekly. Students will learn to stay grounded while deescalating difficult conversations, recognize and set healthy boundaries, create healthy differentiation and emotional security, recognize and work with our own obstacles to empathy and self-empathy, and to build a functional vocabulary of feelings and needs. Students will enter a safe environment for practice, learning, and sharing experiences from our lives in structured in-person and written exercises. Students in this class will gain theoretical and applied understanding of the 12 essential aspects of empathy as it is presented within the Mindful Compassionate Dialogue system of Wise Heart International, created by LaShelle Lowe-Charde.

### **THL338 Insight Dialogue: Interpersonal Meditation (1 credit)**

Insight Dialogue is an interpersonal meditation practice that brings together meditative awareness, the wisdom teachings of the Buddha, and relationship. It is a contemporary practice with the same purposes and traditional roots as silent meditation: developing mindfulness, compassion and liberating insight, while investigating present moment experience. The six

guidelines at the core of the practice help establish the meditative qualities of the mind and to sustain these qualities while participants reflect on topics that encourage a direct and intimate inquiry into the human experience. In this way, relational contact and meditative qualities of the mind help bring root wisdom teachings into lived experience, here and now. The foundational elements of Buddhist paths to liberation include morality, tranquility, and wisdom; in Insight Dialogue these support relationships of mutuality as instrumental to the spiritual path, particularly in cultivating loving-kindness, right speech, right action, concentration, and insight. The Buddha's teachings praising Spiritual Friendships and relational practice are also antidotes to overemphasis upon the individualistic forms of practice in dominant cultures of modernity and opportunity to awaken together. Although Insight Dialogue is grounded in the Buddha's early teachings (Pāli Canon) and the practice of Insight or Vipassanā meditation, people of all faiths and backgrounds are welcome and find benefit in the practice. This course will offer Buddhist texts and teachings from multiple traditions, including the Pali, Sanskrit, and Tibetan Buddhist sources, in guided, interpersonal dialogue-based meditation practices.

### **THL339 Mindful Compassionate Dialogue (1 credit)**

People who experience connection to core values while engaged in meditation, prayer, and other spiritual practices may also find that when they step back into daily life 'off the cushion,' they can get lost in a swirl of criticism, doubt, and confusion, and may not see how to really put those values into action regardless of who and what they encounter. This course asks us to look into our own values and actions, and aims to cultivate insights and the beneficial competencies to find and express compassion, love, and honesty regarding oneself and in relationship with others. Mindful Compassionate Dialogue is framework for these concepts and a systematic set of tools, formed by a combination of Mindfulness, Hakomi (body centered therapy), and Compassionate Communication (also known as Non Violent Communication). This course introduces twelve Relationship Competencies, each with six specific skills. These competencies are the manifestation of compassionate relating and wise action, and arise from nine foundational practices: Attunement, Warmth, Security, Equanimity, Clarity, Concentration, Awareness, Health, and Regulation. These nine foundational practices arise from the core intention to benefit all life (or, for some, bodhicitta). The course will focus on a selection of these competencies, skills, and foundational practices in this introductory eight-week course. As we work together, we will lean into these foundational practices to support your learning and help you create thriving relationships.

### **THL340 Introduction to Contemplative Education (1 credit)**

This course will explore the integration of contemplative practices, philosophies, and orientations into educational practices in modern American education. The course content will focus on the development of the field of contemplative education in K-12 and higher education and span its deepening influence there, as well as examine the way it has been integrated into teaching and learning at all levels. Topics covered will include contemplative pedagogy, contemplative research and inquiry, contemplation and the brain, and contemplative pedagogy in culturally diverse classrooms. This course is suitable for students, researchers, and educators at all levels.

### **THL350 Introduction to Buddhist Chaplaincy (1 credit)**

This course will introduce Buddhist contributions to chaplaincy and/or spiritual care skills and professions, exploring how Buddhist wisdom, compassion, and practices support the spiritual

caregiver to meet the suffering of others effectively and sustainably. The course will explore Buddhist spiritual formation for chaplaincy, Buddhist sources of meaning making and interpersonal communication, and the experiences of Buddhist chaplains pursuing right livelihood in a wide range of sectors. We may also introduce how anyone in these professions, regardless of their spiritual or religious backgrounds, can offer appropriate spiritual care to Buddhist patients, clients, or colleagues. This course is open to anyone, regardless of religious background or prior studies, and may be most suitable for those considering an MDiv graduate degree or a career change, those wishing to introduce Buddhist, contemplative, or spiritual dimensions into their healthcare or caregiving professions or service, or to build cultural and religious competencies. Students can expect active engagement and discussion during the course, both during class sessions for 2 hours per week (in person and synchronously via Zoom) and in the online discussion board as part of their weekly homework, which will consist of up to 3.5 out-of-classroom hours per week of reading, online discussions, contemplative practice, and some writing.

### **THL360 Arts of Ministry: Special Topics (2 credits)**

The arts of ministry are broad and training in them fosters intellectual, spiritual, and pastoral agility, or the expressions and embodiments of spiritual formation and maturation. In theological training, the arts of ministry include organizational, institutional, and congregational history, development, planning, and leadership; pastoral care and counseling; peace and justice social action; homiletics; leading rituals or ceremonies; religious education; exegesis and eisegesis; etc. This course offers specialized exploration of topics, competencies, and emergent areas of praxis for the Buddhist or spiritual minister, chaplain, or leader. Course content and approaches are informed by innovations in chaplaincy education aimed at training students to meet evolving societal needs. Topics may include grief, loss, and bereavement; trauma; human development; psychological dimensions of spiritual care; theological reflection and action reflection; creating systemic change; diverse and emerging service and spiritual care contexts; and so forth. Competencies may be developed in care of institutions or organizations, interpersonal skills, or building resilient worldviews among interfaith, multicultural, and diverse peoples. Faculty or co-teachers will include practicing professionals, and coursework will attend closely to the cultivation of internal qualities and skillful means needed to practice the many arts of ministry.

### **THL364 Buddhist Scriptures: On Compassion**

Whether you are new to Buddhism or have been studying or practicing for years, this course invites you to make an acquaintance with a selection of Pali, Sanskrit, Tibetan, Chinese, and other Buddhist scriptures (in translation) which center on compassionate responses to the suffering of ourselves, others, and the world. Since the Buddha's time, Buddhists have needed to care for each other in old age, sickness, dying, bereavement, and so forth. Shakyamuni Buddha modeled teaching dharma, caretaking sick monastics, and counseling leaders and disciples from a motivation to alleviate and eliminate suffering, a compassionate motivation that weaves through all the stories of bodhisattvas and great teachers. Other texts clarify philosophic views and contemplations that support recognizing suffering, giving rise to the intention to act to alleviate it, and exercising skillful and efficacious means. What do we gain by reading these? We will attempt to engage with texts as "scripture," inquiring whether scripture is more than text when words which have profoundly impacted generations of people also deeply enter into our own lived experiences of what it means to be humans. By approaching texts with the intention to listen for how they speak to us, and while considering their historical contexts, content, and

worldviews, we will come to understand their place in Buddhist lives and in our own lives. Those students with interests in the broad fields of professional caregiving who seek Buddhist sources and models for their work will gain the ability to articulate some Buddhist scriptural foundations for their care of persons and communities, including whether and how diverse premodern Buddhist approaches to the suffering of others can uniquely inform contemporary spiritual care. For us all, these texts put the responsibility and capacity for easing pain, confusion, fear, anxiety, greed, and aversion – and growing in wholesome states of loving-kindness, compassion, joy, and equanimity — in our own healing hands.

### **THL370 Seminar in Buddhist Ministry, Practical/Pastoral Theology, and Spiritual Care: Spiritual Reflection and Meaning (2 credits)**

While a field of Buddhist Practical Theology has yet to fully emerge, for Buddhists who provide spiritual care and counseling as dharma community leaders or teachers within Buddhist communities, or as chaplains, educators, or in helping professions in diverse settings, concern with the intersection of dharma teachings and practice, lived experience, and facilitating spiritual growth infuse our praxis. This seminar explores methods and practices from Buddhist traditions to bolster internal and external capacities for embodying Buddhist teachings in day-to-day life, informed by skillful means, compassion, and wisdom.

In fall of 2024, this course will focus on spiritual reflection as a method for spiritual formation and spiritual care. Beginning with ourselves, we deepen our practices of religious meaning-making in everyday life, before examining how facilitating reflection and narrative/story is a tool for supporting healing or growth in others. Students will participate in personal exploration and sharing, and practice theological reflection and dharmalogical contemplation from various faith traditions and explore this as a tool for bridging religious difference in working with others. Buddhist practices and worldviews will inform how we understand and support people – across a lifespan and in varied circumstances and contexts of religious belongings - to create meaningful relationships with themselves, others, the systems of which they are a part, and transcendent beliefs or ultimate truths. Spiritual reflection is a method for identifying one’s values, the spiritual dimensions of experience, and the life-affirming resources persons can utilize to live aligned with one’s values. This can lead to psychospiritual growth, a clarifying sense of meaning, purpose, and direction, and support for facing injustice and transforming challenges. No pre-requisites. Recommended for MDiv students who have completed or are enrolled in CS303-304.

### **THL410 Buddhist Rituals, Ethics, Services, and Ceremonies (2 credits)**

This course will present an overview of some of the most important rituals, ethics, services, and ceremonies that form the core of Buddhist practice in the Tibetan tradition, and shape everyday life of practitioners. We will begin with an overview of the ethical guidelines for practitioners, including precepts of practice, their purpose, meaning, and how to maintain them. The course will continue with an introduction to and, where relevant, instruction in, rituals, services, and ceremonies performed by the clergy and by practitioners themselves in the course of everyday life. Finally, the course will touch on some of the more esoteric rituals and ceremonies of the tradition, such as divination, offering practices, and so forth, and their significance in the tradition and in the lives of practitioners and Buddhist communities.

### **THL412 Buddhist Rituals and Ceremonies for Healing (2 credits)**

The practice of ethics is central to the Buddhist worldview and entirely relevant not only to oneself but also to every living being, framed within the Buddhist understanding of reality known as *dependent origination*. In Buddhist cultures, specific rituals, services, and ceremonies have arisen as expressions of this fundamental interconnection and as methods for working with oneself and others.

This course will introduce the fundamentals of Buddhist ritual, the ways that ritual is relevant to the daily life of Buddhists, and how the particular ethic of dependent origination is lived in the rituals, services, and ceremonies of Tibet. The focus of this class will be particularly on rituals of healing and restoration, for oneself and others.

#### **THL414 Pathways to Transformation: Buddhist Rituals in Theory and Practice (2 credits)**

This course explores the transformative power of Buddhist rituals through an integration of theory and practice. Students will study key rituals, their historical and theoretical foundations, and their role in transforming the mind and fostering spiritual growth. The course emphasizes experiential learning, encouraging analysis, collaboration in ritual settings, and personal reflection to deepen understanding and a sense of community. Students will develop skills to adapt and apply rituals to contemporary contexts, fostering lifelong engagement with Buddhist practice and an appreciation for the depth and relevance of these traditions.

#### **THL416 Systemic Suffering & Collective Liberation: Awakening to Race, Dharma, and Ourselves (2 credits)**

In the safety and sanctity of this Buddhist environment, this class will explore the deep and troubling issues of race and racism in Oregon, the United States, and in our lives, from the founding of the nation through civil rights and equity movements. The class will begin with histories of race as a social construct, and, drawing upon a variety of media, recognize the harm that racism continues to cause to all. How does Buddhism help us to recognize and work with our biases? How does it provide meaningful solutions and resiliency? Buddhist teachings -- on the truth of suffering, cause, cessation, and path, on overcoming the delusion of an independently existing "I", and the bodhisattva vow to obtain liberation for and with all sentient beings -- are echoed in the teachings of Indigenous, Black, and Brown social justice activists as well as Buddhists who stress that our liberations are not separate but intimately interconnected. We will explore the application of Buddhist tools such as the four noble truths, dependent arising, bodhicitta, and equanimity to the truth of the sufferings of systemic racism and colonialism, its causes, and our roles in its perpetuation and cessation. We will all be learning together in this course through listening cohorts and discussions, and no prior study or experience is required. All are welcome to join regardless of race or background.

#### **THL418 Arts of Buddhist Ministry: Introduction to an Emerging Field (2 credits)**

What is Buddhist Ministry? In recent years, a number of Buddhist professionals and scholars are newly and creatively posing working definitions and disciplinary-defining principles and practices. Buddhist ministry appears to be emerging out the needs and work of at least three realms of practitioners coming together to explore what it means to be Buddhist or draw upon Buddhist traditions in the practice of addressing, often in intimate, face to face encounters, social and individual suffering. These realms are the academic subfield of Buddhist Theology, the professional fields of chaplaincy and psychotherapy, and dharma practice communities. Beyond theoretical meanderings, the increasing needs for lay and western leadership prompt needs for

specialized training, learning from others, and assessing our own resources. This course examines modes of being in religious and spiritual service to self and others, within Buddhist and non-Buddhists contexts. Emphasis will be on practical elements of preparing for and holding leadership, and the personal integration of religious knowledge, personal practice, and identifying one's spiritual authority. Topics will include Buddhist ministry, spiritual authority, spiritual formation, self-assessment, and various models of pastoral or spiritual care. In spring 2018, this will include units on understanding and preparing for clinical pastoral education, homiletic writing and speaking, and guiding in the Buddhist community. Speakers will introduce students to a range of professional and religious paths, such as: chaplaincy, psychotherapy, spiritual direction, mediation, trauma work, FPMT Registered Teacher and Spiritual Program Coordinator, activism, and dharma practice leadership.

### **THL423 Spiritual Care in Practice (1 credit)**

This course will explore different methods of offering compassionate and reflective presence within professional and personal realms. Students will learn current therapeutic professional skills such as basic presence, practice tools for spiritual assessment of self and other, and explore the meaning and importance of life review. Students will learn to objectively assess their personal spiritual traditions and how these inform their bearing witness to human suffering in one's path of caregiving. This course will further offer practical training in communication and contemplative skills that are essential to anyone who wishes to effectively and compassionately engage in a helping relationship with others.

### **THL424 A Good Death: Approaching the End of Life (2 credits)**

What is a “Good Death”? What guides decisions—our own and those of our loved ones, community, and clients—about how to have or support a “Good Death”? This course explores three times—preparing for death, the time of death, and after death—from the perspectives of Tibetan Buddhist religion and contemporary End of Life spiritual care. The course will consider cultural awareness and sensitivity, offer instruction in knowledge and praxis of caring for the dying and the bereaved, cultivate one’s own spiritual preparation for dying, including a facilitated end of life planning process. What dying well looks like, and under what conditions it could be possible, will be found to be diverse and dynamic.

### **THL425: Death, Loss, Grieving and Healing: Personal and Community Processes**

This course will explore preparing for death through to its aftermath for oneself, our loved ones – learning to make deeper use of this powerful opportunity for spiritual practice. The course will also offer practical logistics and resources for offering service to the dying and bereaved in the larger community and in leadership settings, such as a Chaplain or Funeral Celebrant, with multicultural and multifaith awareness and sensitivity. Explore the Tibetan Buddhist view of the great potential for development and transformation this time supports for the mind, as well as the stages of the physical dying process and how to use those ideas. This examination will include a deep dive into our own belief systems and ways of taking refuge in them, as well as tools for supporting others in their refuge connection, specific to their individual worldviews.

### **THL438 Women in Buddhism (1 credit)**

The Buddhist community has always consisted of monks, nuns, laymen, and laywomen, in that order. The question of women's place and standing within Buddhism has, throughout, remained a problematic, contentious, and sometimes confusing one, as the historical Buddhist traditions

seem to offer simultaneously liberative and oppressive perspectives on women. During this course, we will investigate the complex, and changing, status of women in relationship to Buddhist doctrine and practice. We will approach our study through the lens of examining some of the social constructs of Buddha's time into today, as well as through the lens of examining the position that the tradition takes in relationship to the question of the inherent capacity of women, and offer some ideas for an interpretive framework to come to understand how to relate to this. We will end by looking at some examples of exemplary Buddhist women practitioners, in the past and in contemporary times. This course will use contemplative pedagogy as well as traditional pedagogical methods for learning.

### **THL500 Master of Divinity Final Project - Comprehensive Paper in Buddhist Theology and Chaplaincy (4 credits)**

The Master of Divinity program culminates in the completion of a substantial final written project that embodies the integration of the student's practical and theoretical knowledge and understanding gained in the program. The course will meet throughout the term with the designated advisor, Spring term only.

### **THL501 Master of Divinity Final Project - Comprehensive Paper in Buddhist Theology and Chaplaincy (1 credit)**

This course is required of MDiv students who have successfully completed all coursework toward their degree with the exception of their final degree requirement. Students must register for THL501 to maintain residency in their program for each term that their final paper is in process toward submission and approval. Students are strongly advised to meet with their academic advisor in regard to staying in compliance with policies on degree completion. Prerequisite: THL500 Masters Thesis/ Comprehensive Exam (4 credits).

### **THL502 MDiv Final Comprehensive Paper/Project (2 credits)**

See THL500. This course is to be selected when student wishes to complete the four required credits over a year, two in fall and two in spring, in their final year once they have reached advanced standing.

### **THL-CPE1 - Clinical Pastoral Education Unit Internships (6 credits)**

This course has been separated into two credit award options: Transfer Credit award for successful completion of one summer unit of CPE, or credit for alternative External Field Education Placement when created in collaboration with Maitripa College faculty and field supervisor.

### **TIBETAN (TIB)**

#### **TIB101 Introduction to Classical Tibetan Language (2 credits)**

Introduction to alphabet, grammar, and sentence structure of Classical Tibetan language. Students gain first exposure to dictionary use and online resources for Tibetan studies.

#### **TIB102 Introduction to Classical Tibetan Language II (2 credits)**

Continued study of Tibetan grammar, syntax, and vocabulary of Classical Tibetan language.

#### **TIB104 Classical Tibetan Language Summer Intensive Part 1 (2 credits)**

In Part 1, we will learn the foundations of classical Tibetan, beginning with the alphabet, and learning the basics of pronunciation, writing, word formation, and reading of simple phrases and sentences. No prior study of Tibetan language is necessary, although students who already have a basis in Tibetan and wish to improve their skills are welcome to join.

### **TIB106 Classical Tibetan Language Summer Intensive Part 2 (2 credits)**

In Part 2, we will begin learning the grammar, syntax, and vocabulary of classical Tibetan. We will learn how to look up words in Tibetan dictionaries, recognize and use the different types of grammatical particles, and identify the functions of verbs. The goal is to be able to read and understand simple Tibetan sentences in Buddhist texts by the end of this intensive.

### **TIB108 Classical Tibetan Language Summer Intensive (4 credits)**

The focus of this eight-week summer course will be on gaining the ability to pronounce and read paradigmatic Tibetan sentences, then read and debate in Tibetan the early chapters of Pur-bu-jok's *Collected Topics*. This text introduces logical reasoning within a framework of Dharmakīrti's *Commentary on Dignāga's Compendium of Valid Cognition* and the Buddhist Sūtra School system of tenets. In part one of the course we will quickly learn the phonetics of Tibetan as well as Joe Wilson's presentations of verbs and grammar. In part two students will memorize definitions, divisions, and so forth while learning to debate the first topic, colors. Magee's Digital Debate Assistant is a useful tool for understanding and practicing Tibetan debate procedures. If time permits the course will also cover increasingly advanced topics in debate.

### **TIB201 Classical Tibetan Language Intermediate: Reading Class/Bridge to Translation I (2 credits)**

Students continue to deepen their knowledge of Tibetan grammar and syntax through reading and decoding basic verse and prose texts and commentaries on Buddhist philosophy and practice in their original language. This course also introduces basic translation theory. Whenever possible, students receive oral commentary of the texts they are working with as part of the class, and being to learn how to "decode" some of the more cryptic forms of Tibetan philosophical exegesis.

### **TIB202 Classical Tibetan Language Intermediate: Reading Class/Bridge to Translation II (2 credits)**

Students continue to deepen their knowledge of Tibetan grammar and syntax through reading and decoding more complex texts, treatises, poetry, and commentaries on Buddhist philosophy and practice in their original language. This course includes the continued study of translation theory, and students will begin working on their own basic translations. Students receive oral commentary of the texts they are working with as part of the course and as an aid to their understanding and translation of the texts.

### **TIB301r Advanced Tibetan Reading Class (2 credits)**

Students read and translate Tibetan texts and their commentaries in their original language. In this course we will learn reading and reciting Tibetan texts, developing pronunciation, and translating with an emphasis on communicating the meaning.

# ACADEMIC POLICIES AND REGULATIONS

---

## ACADEMIC ADVISING

Academic advisement is a process by which Maitripa College helps each enrolled student realize his or her potential, and acts as a support for that student's academic and personal growth. Maitripa College degree students will be assigned an academic advisor.

Academic advisor's activities may include but are not limited to the following:

- Provide recommendations for course sequence and choice of electives to complete the degree program
- Provide information about general education and graduation requirements
- Provide support for general adjustments to Maitripa College and/or graduate school
- Provide assistance in seeking doctorate education outside of Maitripa College
- Provide information about career options and the value of a particular degree or concentration of study
- Provide assistance with registration and course scheduling or referrals to administrators who can provide such assistance
- Provide help with study habits, learning techniques, and research and writing skills
- Provide guidance with Final Project, Thesis or Exam preparation

## RESPONSIBILITIES OF MAITRIPA COLLEGE

- The responsibility of ensuring the availability of academic advisement rests with the program director
- Student advisement (e.g. meeting individually with students to provide information about course requirements and student progress, working with students on independent projects of student and faculty interest, etc.) is part of the regular workload of every full-time faculty member, and may be delegated to part-time faculty as well
- Faculty and instructors are required to offer access to students for advising related to progression in courses they are teaching
- The Office of the Registrar shall provide periodic updated information on academic policies and procedures including, but not limited to, rules and policies, graduation requirements, petition processes, and grading policies to academic advisors
- Maitripa College shall provide students with timely notice of academic probation status
- Maitripa College administration shall provide students with the documents and forms necessary for administrative record keeping, including academic status changes, transfers, etc.
- Maitripa College shall provide international students advising with a Student and Exchange Visitor Program's Primary Designated Student Official (SEVP DSO) at Maitripa
- Maitripa College shall provide program information in a clear, succinct, and easily understandable manner, such as through a brochure, website, a Catalog, and/or a checklist of major/degree requirements

## RESPONSIBILITIES OF STUDENTS

- Students must familiarize themselves with Maitripa College requirements
- Students agree to conduct themselves in accordance with the Rules of Ethical Conduct
- Students must bring current information regarding progress toward degree completion to meetings with their advisor
- All students should meet with an advisor on a regular basis once an advisor is assigned, at least once per semester
- Making and keeping appointments to see advisors is the responsibility of the students

## ACADEMIC FRAMEWORK

### ACADEMIC YEAR

The academic year at Maitripa is based on two semesters and a summer term. Fall and Spring semesters are sixteen weeks in duration with one week break each. Spring term begins in early January and runs through April. Fall term begins in late August/early September and ends in mid December. Summer term is ten weeks in duration, from May through July.

### CREDIT EARNED

At Maitripa College, one unit of academic credit is earned through 45 hours of student engagement. Online instructional time includes regular and substantive interaction (RSI) between faculty and students, as defined by federal guidelines. Residency hours contribute to instructional time where appropriate.

### ACADEMIC STANDARDS

Students are held to the highest possible level of academic standards. Classes at Maitripa are taught at a graduate level, and students are expected to fulfill all requirements for all classes without exception to continue toward graduation. No student may receive credit for a course in which the grade received was C+ or lower, and students must maintain GPAs of 3.0 or higher. Students have the option to re-take a course in which they receive a C+ or lower but will only receive credit once.

### ACADEMIC EVALUATIONS

Students are evaluated regularly by a committee of faculty and academic staff, based on the grades they have received for the semester(s) they have completed. Students may be matriculated, passed on, or placed on probation based on their performance.

### ADVANCED STANDING

Maitripa College does not accept credit for advanced standing at this time.

### ALUMNI

Alumni are welcome to enroll as auditors with Alumni Scholarship to cover 100% of tuition. Courses will appear on one's transcript as AUD.

Degree Program and Continuing Education students are not permitted to enroll as auditors at Maitripa College.

## ENROLLMENT AND PROGRESS

### CLASS ATTENDANCE

In distance education courses, attendance is defined as regular and substantive participation in all required learning activities, including asynchronous coursework, synchronous online sessions, residency experiences, and self-paced study and practice. Attendance is demonstrated through timely submission of assignments, participation in discussions and live meetings, full engagement in residency requirements, and completion of assigned independent work. Logging into the course site alone does not constitute attendance. Students who miss required components must communicate promptly with the instructor. Excessive absence or non-participation may result in academic penalty, failure of the course, or requirement to repeat missed components.

### CLASS WITHDRAWAL AND INCOMPLETE

Students are responsible for consulting the Academic Calendar online and in email notifications from administrators for each semester's drop/add period and closing date, approximately the tenth day of the semester. After drop/add, if a student chooses to terminate enrollment in a course, it is considered a withdrawal. Maitripa College requires that a student who wishes to withdraw from a course complete the Course Withdrawal Form available from the Registrar. This form will prompt students to inform their professor, advisor and registrar of the withdrawal. The registrar will post a "W" on the transcript. No credits or grades will be awarded for partial work completed as part of the course. A grade of "W" can be replaced by re-taking the course at a future time.

Unlike a withdrawal, an incomplete, "I", is a temporary grade given to a student who is enrolled in a course but is unable to complete the work by the specified deadlines for some extenuating circumstance. An Incomplete Form or written communication between student and faculty must be signed by the instructor and submitted to the Registrar on or before the last day of the class. An incomplete grade may be given, at the discretion of the instructor, provided the work for the course will be completed within an agreed upon time frame. If the work is completed in the time stipulated, the "I" is replaced with the earned grade and credit for the course is granted. If the work is not completed in the agreed upon time frame, the instructor will issue a grade that is commensurate with the work completed, no more than one year from the course end date.

### PROGRAM LEAVE OF ABSENCE

A program leave of absence is a plan to leave the College with a specific, pre-approved return term, issued no later than the end of the drop/add period for the term in which the leave commences. A leave of absence may be approved for one semester or year. Students may be eligible for up to two years of leave, cumulatively. An approved leave of absence does not change the degree completion time limit. A Leave of Absence Form request must be signed by the Academic Advisor and the Program Director or Chief Academic Officer and submitted to the Registrar. For discontinuing enrollment after this date, see program withdrawal or course withdrawal policies.

## PROGRAM WITHDRAWALS

Discontinuing enrollment in a degree program without an approved Leave of Absence, before or during a semester, constitutes withdrawal from the degree program. If a student chooses to withdraw from a degree program, they must submit a Program Withdraw Form signed by the Academic Advisor and the Program Director or Chief Academic Officer and submitted to the Registrar. The tuition and fees owed/refunded will be commensurate with the Tuition Schedule and Refund Policy.

## SATISFACTORY ACADEMIC PROGRESS

Academic Advisors will review students' records annually to ensure that satisfactory progress is being made, and program requirements are being met in a timely manner. Satisfactory progress for degree students is defined as completing a minimum of 17 credits per year with a GPA of B- or above in all courses. Part time degree students are expected to demonstrate commitment to degree progression. Any student whose GPA falls below 3.0 at any time in the program will be placed on academic probation. If the student's GPA does not rise above 3.0 in the next semester of completed coursework, the student will be dismissed from the program.

## SEPARATION

There are several academic reasons for which a student may be separated from a degree program. The first is a student's GPA falls below a 3.0 for two consecutive semesters (see Satisfactory Academic Progress for details). In the second instance, a student may be separated for making unsatisfactory progress toward the degree completion. Finally, if a student does not re-enroll after their approved Leave of Absence, they will automatically be separated from the degree program.

Please note: Students may be placed on probation or separated from the degree program due to failure to remain in good standing according to the College's disciplinary and financial policies.

## READMISSION TO GRADUATE DEGREE STANDING

Following academic separation or a requested withdraw, consideration for readmission to the degree program within Maitripa College may be requested by filing a Re-admission Request Form to the Office of the Registrar. In the case of separation for unsatisfactory academic progress, a student must complete a minimum of seven credits as a continuing education (non-degree seeking) student, while maintaining a semester GPA of 3.0.

## GRADING AND APPEALS

### EXAMINATIONS

Examinations will be given in all courses in a form to be determined by the course instructor.

### GRADING SYSTEM

All grades are to be submitted no later than one week after the final examination has been given for classes, or after the last official meeting of the class. Grade point averages are determined from letter grades as follows:

Letter	Minimum Points	Direct Equivalent	Grade Points	Fail
A	94.00	96.00	4.00	
A-	90.00	91.50	3.70	
B+	88.00	89.00	3.30	
B	83.00	85.50	3.00	
B-	80.00	81.50	2.70	
C+	78.00	79.00	2.30	X
C	73.00	75.50	2.00	X
C-	70.00	71.50	1.70	X
D+	68.00	69.00	1.30	X
D	63.00	65.50	1.00	X
D-	60.00	61.50	0.70	X
F	0.00	0.00	0.00	X

#### GRADE OF INCOMPLETE

Grades of incomplete (“I”) may be given at the discretion of the instructor, provided the work for the course will be completed by the student within an agreed-upon amount of time, in accordance with Maitripa policy, and within the limitations period on grade changes. An “I” may be entered in place of a regular grade. If the “I” is not replaced within a year from the date of the end of the last class, it will transform into a permanent “F.” Petition forms for extension of an incomplete can be obtained from the administrative office. Contact the Office of the Registrar for details on such a petition.

#### GRADE CHANGES

Grades may be changed at the discretion of the course instructor, for due cause, up to one year after the course has completed. After this time grades are permanent and cannot be changed.

#### APPEALING A GRADE

Students may appeal a grade only when they can document one or more of the following:

- An error in grade calculation
- Failure of the instructor to clearly notify students of the grading criteria
- Assignment of a grade based on reasons other than the announced criteria and standards
- Assignment of a grade based on factors other than student achievement, e.g., personal bias
- Inconsistent or inequitably applied standards for evaluation of student academic performance

If the student believes that the grade received is based upon unlawful discrimination, or sexual harassment, as defined in these policies and procedures, the student should proceed under the procedures in this handbook related to grievances and sanctions.

Once a student believes they have grounds for appealing a grade issued by an instructor the following procedures should be initiated: The student must submit a written appeal to the Program Director within 30 days of the end date of the course. The student will be required to provide documentation proving the occurrence of one or more of the above criteria.

Within 45 days of the end date of the course, the student must provide clear documentation that demonstrates the occurrence of one or more of the above-listed grounds for appeal. Documentation may be in the form of e-mail correspondence, graded assignments, proof of timely submission, etc. The student must also provide evidence of the level of achievement in support of the particular grade that the student believes they should have been awarded. If the evidence meets the criteria, the Chief Academic Officer forwards the student's written statement to the instructor for a response, which the instructor must provide within 15 days. The Chief Academic Officer then refers all documentation to the grade appeals committee.

#### GRADE APPEALS COMMITTEE

The grade appeals committee consists of faculty members appointed by the President. The grade appeals committee considers the documentation and may decide either to change or uphold the grade.

The grade appeals committee will render a final decision within thirty days of receiving the grade appeal information from the Chief Academic Officer. This decision is forwarded to the Chief Academic Officer who informs the student, the instructor and the administrative office of the decision in writing.

#### ACADEMIC GRIEVANCE POLICY

Maitripa College is committed to maintaining a learning environment grounded in fairness, mutual respect, and academic integrity. This policy establishes a clear, equitable process through which students may raise and resolve academic grievances. The policy ensures due process, timely review, and consistent application of academic standards.

#### Definition of Academic Grievance

An academic grievance is a complaint or dispute concerning an academic decision, action, or policy that directly affects a student's academic standing or progress. Academic grievances may include, but are not limited to:

- Course grades or evaluation of academic work
- Academic progress or probation decisions
- Course requirements, syllabi, or instructional practices
- Decisions related to transfer credit or credit equivalency
- Alleged misapplication of published academic policies

This policy does not apply to non-academic complaints (e.g., financial aid, tuition, facilities, or administrative services) or to allegations of discrimination, harassment, or sexual misconduct, which are addressed under separate College policies.

#### Guiding Principles

The academic grievance process at Maitripa College is guided by the following principles:

- Equity and consistency in decision-making

- Transparency of procedures and outcomes
- Timely resolution at each stage of review
- Confidentiality consistent with FERPA and applicable law
- Non-retaliation against students who file grievances in good faith

#### Informal Resolution

Maitripa College encourages students to seek informal resolution whenever appropriate.

#### **Step 1: Instructor Consultation**

Within 14 calendar days of the academic decision or incident giving rise to the grievance, the student should attempt to resolve the matter through direct communication with the course instructor or faculty member involved.

#### **Step 2: Program-Level Review**

If the issue is not resolved, or if the student is uncomfortable contacting the instructor, the student may consult the Academic Program Director for clarification, mediation, or informal review.

Informal resolution is strongly encouraged but not required if the student believes it would be ineffective or inappropriate.

#### Formal Academic Grievance Process

If informal efforts do not resolve the issue, the student may initiate a formal academic grievance.

#### **Step 3: Submission of Written Grievance**

The student must submit a written Academic Grievance to the Director of Programs within 30 calendar days of the incident or the conclusion of informal resolution efforts.

The written grievance must include:

- A clear description of the academic decision or action being challenged
- The grounds for the grievance, including relevant policies or standards
- Supporting documentation (e.g., assignments, emails, syllabi)
- The resolution or remedy sought

#### **Step 4: Administrative Review and Decision**

The Program Director, in consultation with the Chief Academic Officer, as appropriate, will:

- Acknowledge receipt of the grievance in writing
- Review all submitted materials
- Consult with relevant faculty members or administrators

A written decision will be issued within 15 business days. If additional time is required, the student will be notified in writing.

#### Appeal Process

## **Step 5: Institutional Appeal**

If the student is dissatisfied with the decision, they may submit a written appeal to the College President within 14 calendar days of receipt of the decision.

Appeals must be based on one or more of the following grounds:

- A procedural error that materially affected the outcome
- New evidence not reasonably available at the time of the original review
- Evidence of bias or arbitrary or capricious decision-making

The President may review the appeal independently or convene an Academic Appeals Committee. A final written decision will be issued within 15 business days. The decision of the President or Appeals Committee is final within the institution.

### External Complaint Options

If the student has exhausted Maitripa College's internal grievance and appeal process, they may submit a complaint to external oversight bodies as appropriate.

Oregon Higher Education Coordinating Commission (HECC)  
Office of Degree Authorization (ODA)

Students residing in Oregon or enrolled in Oregon-authorized programs may file a complaint after completing the College's internal process.

Current contact information for these agencies is published in the Maitripa College Academic Catalog and on the College website.

### Records and Confidentiality

- All academic grievance records are maintained by Maitripa College in accordance with FERPA and applicable state and federal regulations.
- Records are accessible only to individuals with a legitimate educational or administrative need to know.

### Non-Retaliation

Maitripa College prohibits retaliation against any student who files an academic grievance or participates in the grievance process in good faith. Any act of retaliation constitutes a violation of College policy and may result in disciplinary action.

### Policy Review and Authority

This policy is reviewed periodically to ensure ongoing compliance with [HECC-ODA](#) requirements, DEAC standards, and best practices in higher education. The College reserves the right to amend this policy as necessary, with notice provided to students through official College publications.

DEGREE COMPLETION

DEGREE REQUIREMENTS

The Master of Arts in Buddhist Studies and the Master of Divinity degrees will be awarded to students who have completed the minimum credits required and culminating

project. Students are encouraged to utilize the Degree Audit tracking function in Populi and meet with an advisor each semester to monitor coursework distribution and progression to fulfilling requirements for degree completion.

Courses from other colleges, universities, or educational programs generally may not be awarded transfer credit at Maitripa College, but under certain conditions, transfer credit may be recognized; see Transfer Credit policy in the Admissions section.

#### DEMONSTRATION OF FINAL MASTERY

##### Master of Arts in Buddhist Studies (MA) and Master of Divinity (MDiv)

Action Research Project (*see ARP601; ARP602*) - The Action Research Project is a form of integrative and collaborative research, reflection, and writing. Students choose a principal question and work with faculty mentors to design a research project, implement the research over a period of six months or longer, and analyze and share, in written and oral forms, their findings. The Action Research Project is intended to synthesize learning over the course of the curricula, the students' personal, academic, and spiritual formation, and ethical and transformative action.

#### DEGREE CONFERRAL, DIPLOMAS, AND TRANSCRIPTS

A degree is a credential. There are two documents that provide evidence of that credential: an official transcript and a diploma. Both are available to students who have completed all of their degree requirements and have had their degrees conferred.

Degree conferral is the official process used to grant a degree. Upon the student's completion of degree requirements and submission of the Application to Receive a Degree, the registrar works with the student's advisor to ensure that all degree requirements have been met. If all requirements have been met, the registrar posts the degree to the official transcript.

The degree conferral date is the date that will appear on transcripts and on diplomas. Maitripa College has three degree conferral dates per year, one each term.

- Fall: last day of the fall semester
- Spring: last day of the spring semester
- Summer: last day of the summer term

During the selected term students apply for conferral, they must be enrolled in or auditing at least one course. By the end of the selected term, all requirements must be complete.

#### COMMENCEMENT CEREMONY

Maitripa College honors degree recipients with an annual commencement ceremony. Although there are three conferral dates per year, there is only one commencement ceremony.

Students may participate in the May commencement ceremony if they have had their degree conferred during that academic year.

Note: Neither participation in the commencement ceremony, nor having one's name printed in the commencement bulletin is confirmation that a degree has been conferred.

## FACULTY AND ADMINISTRATION

---

Maitripa College is an educational organization. It is a nonprofit corporation, primarily for educational purposes, and is not organized for the private gain of any person, under the statutes of Oregon Nonprofit Corporation Law.

The specific and primary purpose of this corporation is to engage in religious, charitable, literary, and educational activities within the meaning of Section 501(c)(3) of the Internal Revenue code of 1986, as amended, or the corresponding provisions of any future United States internal revenue law (the “Code”), in accordance with the precepts and teachings of Buddhism.

Maitripa College is overseen by a board of trustees in conjunction with founder Yangsi Rinpoche, who closely follows the development and integration of its mission and vision. This work is supported on a day-to-day basis by a competent faculty and administrative staff, directly in charge of the day-to-day affairs of the College.

### ADMINISTRATIVE STRUCTURE

#### BOARD OF TRUSTEES

José Ignacio Cabezón, PhD  
Pamela Cayton  
Alberto Fournier, PhD  
Nicolas Ribush, MD  
Scott South  
Mark Waller  
Yangsi Rinpoche, Geshe Lharampa  
Namdrol Miranda Adams, EdD (de facto)

#### PRESIDENT

Namdrol Miranda Adams, EdD

#### FACULTY AND SENIOR SANGHA

Namdrol Miranda Adams  
EdD, University of Portland  
MA, Educational Leadership, Portland State University  
BA, English Literature, Columbia University  
  
Sam Go  
MDiv, Maitripa College  
MA, Accountancy, University of Las Vegas  
BS, Business Administration, University of Las Vegas  
  
Venerable Drolma Ann Kane  
MA, Buddhist Studies, Maitripa College, 2012  
MA, Education, University of Denver, 1986  
BA, Psychology and Religious Studies, Southern Illinois University at Carbondale, 1983

Patrick Lambelet

PhD, Religious Studies, University of California, Santa Barbara

MA, Religious Studies, University of Chicago Divinity School

BA, Humanities, San Francisco State University

Leigh Miller

PhD, Culture, History, and Theory: Modern Tibet, Emory University

MA, Institute of Liberal Arts, Emory University

BA, Psychology, Emory University

Tiffany Blumenthal Patrella

MS, Education: Curriculum and Instruction, Portland State University

BCUCS, Retail Merchandising, Ohio University

BBA, Business Management Information Systems, Ohio University

Yangsi Rinpoche (Kesang Tuladhar)

Geshe Lharampa, Sera Je Monastic University (equivalent of doctorate in Buddhist Studies)

Venerable Lozang Yönten

Buddhist Studies Program, Chenrezig Institute, Australia

Tibetan Language and Buddhist Studies, Thösamling Institute, India

Vinaya Studies, Pu Yin Tuan Temple and Da Xian Temple, Taiwan

Buddhist Program, Chandrakirti Centre, New Zealand

#### ADMINISTRATION

Namdrol Miranda Adams, President, Chief Academic Officer

EdD, University of Portland

MA, Educational Leadership, Portland State University

BA, English Literature, New York University

Tiffany Blumenthal Patrella, Chief Operations Officer

MS, Education: Curriculum and Instruction, Portland State University

BCUCS, Retail Merchandising, Ohio University

BBA, Business Management Information Systems, Ohio University

Sam Go, Chief Financial Officer

MDiv, Maitripa College

MA, Accountancy, University of Las Vegas

BS, Business Administration, University of Las Vegas

Alfredo Piñeiro, Chief Technical Officer

BA, Computer Science, University of Puerto Rico

Bhikshuni Lozang Yönten, Chaplain, Spiritual Director, Abbess of the Maitripa Rabjungma Community

Buddhist Studies Program, Chenrezig Institute, Australia

Tibetan Language and Buddhist Studies, Thösamling Institute, India

Vinaya Studies, Pu Yin Tuan Temple and Da Xian Temple, Taiwan

Buddhist Program, Chandrakirti Centre, New Zealand

Leigh Miller, Faculty Chair, Director of the MDiv Degree and Chaplaincy Program  
PhD, Culture, History, and Theory: Modern Tibet, Emory University  
MA, Institute of Liberal Arts, Emory University  
BA, Psychology, Emory University

Linda Brown, Director of Admissions and Librarian  
MLS, Library and Information Studies, Rutgers University  
BA, English Literature, University of Maryland

Louise Light, Design Director and Webmaster  
MCP, Master of City & Environmental Planning, University of California, Berkeley  
BS, Independent Major: Urban Studies, University of California, Berkeley

Alexandria Levy, Community Life Coordinator  
MA, Maitripa College  
BA, Religious Studies, Austin College

#### PRIMARY CONSULTANTS

Kenneth Ivey, CPA Financial Oversight: Oversight and supervision of finances, bookkeeping oversight, and advising staff on relevant external agency requirements, such as IRS and federal and state accounting laws.

Rupa Jack, CIMA®, CWS® Senior Vice President, Wealth Advisor, Morgan Stanley Wealth Management: Advising and Management of Assets

#### VISITING RESEARCH PROFESSOR

The intellectual culture at Maitripa College will be enriched periodically with the appointment of Visiting Research Professors for a period of one – two semesters. This non-salaried position for tenured professors of accredited universities includes a tuition remission of up to 75 percent, library privileges, and, if available, access to office space and administrative support. Visiting Research Professors recognize in Maitripa College faculty and library a unique opportunity to acquire or build upon expertise in Buddhist studies. In addition to pursuing their own studies and research at Maitripa, visitors may also be invited to participate in the academic life of the College by presenting their scholarly work to graduate students, faculty and/or the public in guest lectures, seminars or symposia, through discussion with graduate students, or conducting collaborative research.

# STUDENT SERVICES

---

## GENERAL BUILDING INFORMATION

The Maitripa College entrance is located at 1632 SE 11<sup>th</sup> Avenue. Please enter the building through this entrance and avoid entering through the Market Street side of the building. Maitripa students are expected to respect Maitripa Tara School and should not enter at any time without invitation.

As an urban campus, we encourage students to protect the security of their belongings by keeping personal items with them while on campus or utilizing the student lockers on the second floor. Please do not leave bags in common areas while class is in session.

The restroom lights come on and off automatically. Please wait a few seconds for lights to come on as turning them on manually will prevent the automatic system from working properly.

## ENVIRONMENTAL STEWARDSHIP: BUILDING, ENERGY, AND SUSTAINABILITY PRACTICES

Maitripa College is committed to environmental stewardship. The building has been renovated with enhanced insulation, energy-efficient windows, and high-efficiency lighting throughout. Water conservation fixtures, motion-sensor lighting, and energy-conscious practices, such as powering down computers and equipment when not in use, help minimize our environmental footprint. Bike racks are available to encourage sustainable commuting, and we are working toward powering the building entirely with electricity from renewable sources. The College also minimizes waste through clearly marked recycling bins throughout the building, including the kitchen and student commons, and by recycling used toner and ink cartridges. The kitchen uses reusable dishes, silverware, and glasses whenever possible. Non-toxic cleaning products are used exclusively, and filtered drinking water is available to reduce plastic bottle waste.

## FACILITIES: SPECIFIC INFORMATION FOR STUDENTS

### ADMINISTRATIVE OFFICES

Maitripa's administrative offices are open Monday through Friday, 10 am to 4 pm. Please call ahead to schedule an appointment with a staff member to ensure that they are available for your needs.

### COURSE MATERIALS

Students are responsible for purchasing their own course materials for each semester. Maitripa College does not have a bookstore. Students are encouraged to check the "Current Students" section of the website for book lists for courses prior to the semester. Copies of all texts are available in the library on the Course Reserves and additional copies may be available for circulation.

### PUBLIC PROGRAMS

Maitripa College offers public programs such as weekly teachings and group meditation, monthly pujas and holiday observance, weekend workshops, short courses, continuing education, conferences, retreats, and pilgrimages that are open to the general community as well as the

student body. Public program events are taught by invited guests as well as faculty members. Students are invited and encouraged to attend public program events whenever possible.

#### JOKHANG MEDITATION HALL

The Jokhang meditation hall at Maitripa College hosts traditional Tibetan Buddhist religious teachings, rituals and prayers, and visiting lamas. It was given its name by Maitripa College's president and primary teacher, Yangsi Rinpoche, after the famed temple in Lhasa, Tibet. In the spirit of generosity, all Jokhang programs are offered to the public free of charge, although participants are invited to offer donations as an expression of support. The Jokhang strives to operate in a spirit of openness and community, and everyone is welcome to come at any time for any activity in the meditation hall, regardless of religious affiliation.

The mission of the Jokhang meditation hall at Maitripa College is to offer traditional Tibetan Buddhist religious teachings to our graduate students, the local community and the public at large, to create an environment in which group spiritual practice may be developed and sustained, and to offer a forum in which to foster the spirit of community and friendship among all.

#### STUDENT COMMONS

The student commons is open and available for student use before and after classes, public teachings, and special events. Students may also organize study groups to meet in the student commons whenever staff are onsite.

#### PARKING

Street parking is available on SE Market, SE 11th St. and neighboring streets. Please read the street signs and obey them. Parallel parking must face the direction of traffic for that side of the street.

#### JAMES A. BLUMENTHAL LIBRARY

##### MISSION STATEMENT

The mission of the James A. Blumenthal Library at Maitripa College is to support the broader mission of the College by providing the highest standard of resources in Western and Buddhist languages for scholars, faculty, and the interested public. The library will provide physical facilities that encourage individual and collaborative education and promote engaged discourse and active exchange of ideas.

The James A. Blumenthal Library at Maitripa College currently holds over 5,000 titles in print and multimedia materials. The majority of collection holdings are English-language book titles, while additional titles include videos of teachings and films, audio media for Tibetan-language study, magazines and journals, as well as Tibetan, Sanskrit, and Chinese works. To fulfill Maitripa College's mission of offering a world-class enlightened education for the 21st century, a world-class research library is essential. Acquisition lists are developed in consultation with internationally respected professors of Buddhist studies, and a lending and research facility is being developed to meet the highest standards for electronic, archival, and print resources for the use of our students, faculty, and local community for many years to come.

## ACCESS TO MAITRIPA COLLEGE LIBRARY COLLECTIONS

Library hours are posted online and outside the library, and generally provide access to the collections and circulation on weekdays. Please make an appointment to visit outside of posted library hours.

Enrolled students, faculty, and staff have access to the Maitripa College collections of print and digital materials, media, online research databases, and reserve materials, in accordance with borrowing and use policies.

A library fee is required of all enrolled students. This fee goes toward costs associated with technology, circulation, research resources, subscriptions, acquisitions, and equipment.

Alumni, former students (not enrolled in the current semester), and the general public may obtain circulation privileges with a Community Membership for \$35 per year. Community membership forms are on file at the circulation desk.

Non-members may access collections of print materials and media for on-site use only during library hours.

## LIBRARY USE

The library catalog and online academic resources are available at <http://maitripa.org/library/>

Circulation of print materials and media is available with assistance during posted open hours or by appointment.

All materials in circulation are subject to recall and/or non-renewal if items are required by faculty, staff, or currently enrolled degree students. Access to online research databases and course reserve materials are restricted to enrolled degree and CE students, faculty, and staff only.

Current students will be offered opportunities to attend library orientation sessions and to receive consultation from librarians or qualified volunteers for guidance on using library resources.

## BORROWING PRIVILEGES FOR PRINT AND MULTIMEDIA

To check out any materials, all patrons must be assisted by a staff, librarian, or staff-trained volunteer.

## CIRCULATION

Books are checked out for 45 days. Audio and Video Materials and Periodicals are available for ten days. Reserve Materials are available for onsite use.

All materials can be renewed three consecutive times if they are not recalled or placed on hold by another patron.

Faculty and currently enrolled students may recall materials needed for research or syllabi purposes. The patron will have seven days to return the recalled item(s). Faculty and students may also put a hold on an item, and will be notified when it is returned and held for them to pick up promptly.

To renew, recall, or hold items, email: [library@maitripa.org](mailto:library@maitripa.org)

## OVERDUE, LOST, AND DAMAGED MATERIALS

Patrons will be notified via email of overdue materials. Lost or unreturned items will result in the billing of the patron for the replacement cost plus \$10. Books that are more than two months overdue will be considered lost, and the library user will be notified. Replacement cost is based on the average current price listed on Amazon.com or the publisher. Charges for out-of-print books will be determined from the average price listed by a book dealer or by the average price of Library materials of similar subject matter and condition. A \$10 service fee will be charged in addition to the replacement cost for all lost or damaged items. Patrons will be billed by mail. Borrowing privileges will be suspended if patrons incur overdue balances exceeding \$20.

## COURSE RESERVES

Reserve materials rotate each semester. Materials are placed on reserve by course faculty and are intended for short-term, on-site borrowing by students enrolled in their course to maximize access to limited materials. These materials may include any item in the library's print and media collections. Check out is for two hours; items may not be removed from Maitripa College, and priority is given to students enrolled in the course. Additional copies of Reserve items may be found in their usual shelving location by call number; any regularly shelved copies may be checked out.

## LIBRARY NOTICES

Patrons must provide a valid email address upon check-out. Patrons will be notified of overdue items via email.

## MINIMUM TECHNOLOGY REQUIREMENTS

Maitripa College offers students both onsite and online course delivery formats, creating the conditions for an educational journey grounded in spiritual and community formation. A computer (ideally a laptop) is required for all degree, continuing education, and auditing students.

This document describes the minimum technology requirements students must meet in order to ensure a reliable and effective learning experience at Maitripa College. Students are responsible for ensuring their equipment and internet access meet these requirements before beginning coursework.

## RECOMMENDED STUDENT COMPUTER SPECIFICATION

The following specifications ensure smooth performance for online learning, document editing, web browsing, video conferencing, and multitasking between applications:

- Operating System: Windows 11, macOS 12+, or Linux (Ubuntu 20.04+, Fedora 35+, or similar modern distributions)
- Processor: Intel Core i5 (11th gen or newer) or AMD Ryzen 5 5000 series or Apple M1/M2
- RAM: 8 GB minimum, 16 GB preferred
- Storage: 256 GB SSD minimum, 512 GB preferred
- Display: 1920 x 1080 (Full HD)
- Webcam: 720p or better (required for synchronous sessions)

- Internet: 10+ Mbps broadband (wired or reliable Wi-Fi)
- Audio: Built-in speakers/microphone or USB headset

#### REQUIRED INSTITUTIONAL PLATFORMS

Maitripa College uses the following platforms to deliver coursework, facilitate communication, and support academic operations. All students must be able to access and use these platforms. Account credentials and on-boarding instructions are provided upon enrollment.

#### Populi: Student Information System and Learning Management System

Populi is Maitripa College's integrated student information system (SIS) and learning management system (LMS). Students use Populi to access course materials, submit assignments, participate in discussions, view grades, communicate with faculty, register for courses, and manage their student accounts. Requirements:

- A modern, up-to-date web browser: Google Chrome (recommended), Mozilla Firefox, Apple Safari (macOS), or Microsoft Edge
- High-speed internet connection
- JavaScript and cookies enabled in browser settings
- No additional software installation required. Populi is entirely web-based

#### Zoom: Video Conferencing for Synchronous Sessions

Zoom is used for live synchronous class sessions, faculty office hours, advising meetings, and community events. Students are expected to participate with both video and audio enabled during synchronous sessions. Requirements:

- Zoom Workplace desktop application (free download from zoom.us); students should keep the application updated to the latest version
- Supported operating systems: Windows 11 or later (64-bit), macOS 10.13 or later, or major Linux distributions (Ubuntu 16.04+, Fedora 30+)
- Webcam (720p or better) and microphone/headset
- Bandwidth: minimum 3 Mbps for group video calls; 10+ Mbps recommended

#### Google Workspace: Email and Collaboration

Maitripa College provides students with institutional email accounts through Google Workspace for Nonprofits. Students use their Maitripa Google account for official College communications, and may also use other Google Workspace tools for collaborative coursework. Requirements:

- A modern web browser: Google Chrome (recommended), Mozilla Firefox, Apple Safari, or Microsoft Edge
- Internet connection required for all Google Workspace functionality

#### Box: File Storage and Sharing

Maitripa College uses Box for secure file storage and sharing. Students may be directed to access shared course resources, submit materials, or collaborate on documents through Box. Requirements:

- A modern web browser for web-based access (no additional software required)
- Box Drive desktop application (optional, for local file syncing): available for Windows 11+ and macOS 11+

### Library Databases and Research Resources

The James A. Blumenthal Library provides students with access to online research databases, catalogs, and digital resources to support academic coursework. Requirements:

- A modern web browser with JavaScript enabled
- A PDF reader for accessing research articles and documents
- Internet connection required

### SOFTWARE REQUIREMENTS

#### Office Suite

Students need access to an office suite for document creation, spreadsheets, and presentations. Either of the following is acceptable:

#### **Office 365:**

- Available as a web-based version on all platforms (Windows, macOS, Linux)
- Desktop apps available for Windows and macOS only
- Requires a Microsoft account and internet connection

#### **LibreOffice (free and open-source alternative):**

- Fully compatible with Windows, macOS, and Linux
- Works with Microsoft Office file formats (.docx, .xlsx, .pptx)
- Provides Writer (Word), Calc (Excel), Impress (PowerPoint), and more
- Minimum requirements: 1 GB RAM, 1.5 GB disk space
- No internet connection required for core functionality

#### PDF Readers

A PDF reader is required for accessing course readings, research articles, and institutional documents.

- Windows: Adobe Acrobat Reader (free), Microsoft Edge, or Chrome/Firefox built-in viewers
- macOS: Preview (built-in), Adobe Acrobat Reader (free), or Chrome/Firefox built-in viewers
- Linux: Evince/Document Viewer, Okular, Atril, or Firefox/Chrome built-in viewers

#### Web Browsers

- A modern, up-to-date web browser is essential for accessing Populi, Google Workspace, Box, library databases, and all other web-based academic resources. Recommended browsers:
- Google Chrome (recommended), available for Windows, macOS, and Linux; automatic updates; free download from [google.com/chrome](https://www.google.com/chrome)
- Mozilla Firefox, available for Windows, macOS, and Linux; open source and privacy-focused; free download from [firefox.com](https://www.firefox.com)

- Apple Safari, recommended for macOS users; included with macOS
- Microsoft Edge, included with Windows 10 and later

For Linux users: LibreOffice comes pre-installed on many Linux distributions or can be easily installed. Office 365 and Google Workspace are accessible through web browsers (Chrome or Firefox) for full cloud-based functionality.

#### PLATFORM SUMMARY

The following table summarizes all platforms used at Maitripa College and their access method:

<b>Platform</b>	<b>Purpose</b>	<b>Access Methods</b>
Populi	LMS and SIS: courses, assignments, discussions, grades, registration, student account	Web browser (no installation required)
Zoom	Synchronous class sessions, office hours, advising, community events	Desktop application (free download from zoom.us)
Google Workspace	Institutional email, document collaboration (Docs, Sheets, Slides)	Web browser (no installation required)
Box	Secure file storage and sharing	Web browser (optional desktop application)
Library Database	Research databases, digital catalogs, academic resources	Web browser

#### TECHNICAL SUPPORT AND QUESTIONS

Students who have questions about technology requirements or who need assistance with any of the platforms listed above should contact Maitripa College at [support@maitripa.org](mailto:support@maitripa.org) or call 503-235-2477. Technical guidance is also provided during the online pre-semester orientation, which all students are required to complete before beginning coursework.

## COLLEGE POLICIES AND PROCEDURES

---

The following policies and procedures are implemented at Maitripa College to ensure the well-being and benefit of the Maitripa community. As the community aspires to live by the principles of the Buddhist teachings, the College encourages its students, faculty, and staff to integrate these principles into their daily lives.

### FOUNDATIONAL VALUES AND COMMITMENTS

#### NONDISCRIMINATION AND EQUAL OPPORTUNITY POLICY

Maitripa College values the principles of equal opportunity and diversity in relation to education and employment. In accordance with Buddhist principles and with federal and state laws, the College does not discriminate against individuals on the basis of race, color, gender, sexual orientation, gender identity, religion, disability, age, veteran status, ancestry, or national or ethnic origin. This policy applies to all programs and activities of the College, including, but not limited to, the administration of its educational policies, admissions policies, employment policies, scholarships, or any other programs or activities administered by the College.

#### COMMITMENT TO EQUITY AND INCLUSION

On the basis of the recognition of the essential value of every living being, Maitripa College recognizes and celebrates diversity, aspires to respect all aspects of human difference, and commits to achieving a working, teaching, and learning environment that is free from discrimination and harassment, is suffused with loving kindness and acceptance, and is as free from barriers as possible. As a multicultural organization of the 21<sup>st</sup> century, we hold equity and inclusion as a value, and a responsibility. Our approach is based on a commitment to transforming personal and professional relationships within the educative and faith environment of Maitripa College, and on raising consciousness and seeking tools among our communities to support education, conversation, and the creation of inclusive spaces. An important element of this vision is the commitment to bringing the conversation about equity and inclusion to the forefront of the development of Buddhist education and practice in the west.

#### STUDENT RIGHTS, PRIVACY, AND ACCESS

##### CONFIDENTIAL RECORDS

Maitripa College emphasizes the importance of protecting the rights and privacy of its students. All personal information submitted to Maitripa College is kept under strict confidentiality. Personal information and information on students' records will only be released in the case of specific written authorization of the student, and are only disclosed in accordance with the Federal Family Educational Rights and Privacy act, which may include institutional, state or statutorily authorized federal officials, or employees of Maitripa College who need the information to perform their work as required by law, professional responsibilities, or management directives. Confidential student records may not be released to any other person or agency without the student's written consent, unless on receipt of a subpoena or other court order or process. Institutional rules may provide for designated institutional officials to appear in court to test the validity of a subpoena or court order or process relating to release of student records.

An exception may be made by the president, Chief Academic Officer or leadership team if disclosing personally identifiable information is in connection with an emergency in order to protect the health and safety of a student or other individual. In case of an emergency, the factors such as the seriousness of the emergency, the type of information needed, the readiness/ability of the person receiving the information to actually provide assistance, and the urgency of the situation will be considered. This exception to confidentiality should be strictly interpreted.

#### FAMILY EDUCATIONAL RIGHTS AND PRIVACY ACT (FERPA)

##### Notice for Directory Information

Maitripa College has adopted a limited directory information policy. The Family Educational Rights and Privacy Act (FERPA), a Federal law, requires written consent before Maitripa College may disclose personally identifiable information from educational records. However, Maitripa College may disclose appropriately designated “directory information” without written consent, unless you advise otherwise.

Directory information is information that is generally not considered harmful or an invasion of privacy if released.

If you do not want Maitripa College to disclose any or all of the types of information designated below as directory information from your education records without your prior written consent, you must notify the College in writing by the end of the drop/add period for which you are first enrolled. Maitripa College designates the following information as directory information:

- Student's name
- Address
- Telephone listing
- Electronic mail address
- Photograph
- Date and place of birth
- Major field of study
- Dates of attendance
- Academic Standing
- Participation in officially recognized activities and sports
- Degrees, honors, and awards received
- The most recent educational agency or institution attended
- A student ID number or other unique personal identifier that is displayed on a student ID badge, for library or other use outside of the College campus.

(Policy crafted in accordance with FERPA. <https://studentprivacy.ed.gov/ferpa> )

#### RECORDS AFFECTING STUDENTS

##### Review of Student Records

Maitripa College students may inspect or review their educational records after submitting a written request to the administrative office.

##### Change of Student Records

Students may request amendments of the records if these are proven to be inaccurate except in the following instances relevant to Maitripa College:

- Records related exclusively to the student in their capacity as an employee
- Confidential letters of recommendation and confidential statements of recommendation that were placed in the educational records of the student after January 1, 1975, in regards to admission to an educational institution or an application for employment provided that the student has waived rights to inspect and review letters and statements of recommendation

For more on confidentiality, see above policy.

#### Permanence, Duplication, and Disposal of Student Records

Individual student records are maintained for the minimum period of time required to serve the function of the Registrar's Office. When appropriate, the Registrar shall dispose of the records in a manner that ensures confidentiality. The permanent records of a Maitripa College student, primarily transcript reports, are only maintained due to the long-term value to the student or institution. Duplication of student records is minimized. Any duplicate permanent records are destroyed in accordance with the Guide for Retention and Disposal of Student Records available in the Registrar's office.

#### ACCESSIBILITY AND ACCOMMODATIONS POLICY

Maitripa College is committed to providing an accessible learning environment for all students. This commitment is grounded in the College's values — the recognition of the dignity and potential of every person — and in applicable law. As a private educational institution and place of public accommodation, Maitripa College is subject to Title III of the Americans with Disabilities Act of 1990 (ADA) and Oregon's anti-discrimination statutes (ORS Chapter 659A), which together prohibit discrimination on the basis of disability and require the provision of reasonable modifications to policies, practices, and procedures.

The College will provide reasonable accommodations to qualified students with disabilities, provided the accommodation does not fundamentally alter the essential nature of the program or create an undue burden. Accommodations are determined individually and are not applied retroactively.

#### Eligibility

Any enrolled student — degree-seeking or continuing education — with a physical, sensory, cognitive, psychological, or other condition that substantially limits a major life activity may request accommodations. This includes conditions that are chronic, episodic, or temporary. Students are not required to disclose a specific diagnosis; the College's evaluation focuses on functional impact rather than diagnostic label.

#### Requesting Accommodations

Students are encouraged to request accommodations before the semester begins, though requests submitted during the semester will be addressed as promptly as possible. To request accommodations:

1. Contact Student Services. Reach out by email or phone to begin the process. You do not need to describe your diagnosis at this stage.
2. Submit a request and documentation. Complete the *Accommodations Request Form* (available from Student Services or Office of the Registrar page of the website) and provide supporting documentation from a qualified professional — such as a physician, psychologist, or licensed counselor — describing the functional impact of your condition and any recommended accommodations. Students who lack documentation are welcome to contact Student Services to discuss alternatives.
3. Meet with Student Services. A member of the Student Services team will meet with you (by phone, video, or in person) to discuss your needs and determine appropriate accommodations.
4. Receive your Accommodations Letter. If accommodations are approved, you will receive a written Accommodations Letter to share with your instructors at your discretion. Faculty are required to implement approved accommodations promptly. Accommodations should be renewed at the start of each academic year.

To request accommodations, contact:

Student Services @ [studentservices@maitripa.org](mailto:studentservices@maitripa.org)

### Common Accommodations

Approved accommodations vary by individual. Examples include extended time on assessments, alternative formats for course materials, closed captioning or transcripts for recorded content, flexibility with assignment deadlines for disability-related circumstances, and modified participation expectations for synchronous sessions. Students experiencing accessibility barriers in the College’s online platforms or digital materials are encouraged to contact Student Services even without a prior formal request.

### Confidentiality

Disability-related information and documentation are maintained confidentially, separate from academic records, and shared only with personnel who need the information to implement approved accommodations. Faculty are informed of approved accommodations but not of underlying diagnoses or medical details. Students are not required to disclose their disability to instructors or peers.

### Concerns and Appeals

Students who believe an accommodation request was wrongly denied, only partially granted, or not implemented may raise the concern informally with Student Services first. If not resolved, the student may submit a written appeal to the Academic Program Director within 30 calendar days; a written decision will follow within 15 business days. Retaliation against any student for requesting accommodations or raising a concern is strictly prohibited.

Students who believe their rights under the ADA or Oregon law have not been honored after completing the College’s internal process may file a complaint with the U.S. Department of Justice Civil Rights Division at [ada.gov/filing-a-complaint](https://ada.gov/filing-a-complaint), or with the Oregon Bureau of Labor and Industries (BOLI) Civil Rights Division.

### Related Policies

- Nondiscrimination and Equal Opportunity Policy
- Commitment to Equity and Inclusion
- Duty of Care Policy
- Academic Grievance Policy

This policy is reviewed annually and updated as needed.

## SAFETY AND ETHICAL CONDUCT

Maitripa College is committed to fostering a learning and practice environment that is safe, respectful, equitable, and rooted in the Buddhist ethic of non-harm. The following policies work together to define the College’s responsibilities, establish expectations for ethical conduct and professional boundaries, and provide clear pathways for reporting concerns and responding to misconduct. Together, they support the physical, emotional, spiritual, and educational well-being of students, faculty, staff, volunteers, and community participants.

This subsection should be read as an integrated framework. The **Duty of Care** policy sets forth the College’s general responsibility to maintain safe and supportive learning environments and clarifies the scope and limits of institutional, faculty, and staff roles. **Safeguarding Students** explains the College’s protective framework for preventing harm and responding to concerns. **Designated Protection People** identifies the individuals who may receive reports and help guide community members through the reporting process. The **Sexual Misconduct Policy** and **Consensual Relationships Policy** address specific forms of misconduct, boundary violations, and abuses of power that are inconsistent with the mission and values of the College.

Concerns arising under any of these policies may be reported through the channels described below. Depending on the nature of the concern, the College may respond through supportive measures, referral, investigation, protective action, disciplinary procedures, or other appropriate institutional processes.

## DUTY OF CARE

The policies in this subsection begin with the College’s general duty to provide safe, respectful, and appropriately bounded learning and community environments.

### Purpose

This policy outlines Maitripa College’s commitment to providing a safe, respectful, and supportive environment for all who participate in the College’s Graduate School, Continuing Education, and Community Programs. It defines responsibilities and procedures aimed at mitigating risk, preventing harm, and supporting physical, emotional, and spiritual well-being in alignment with the mission and values of Maitripa College.

### Scope of Practice and Limitations

Maitripa College recognizes that faculty, staff, volunteers, and visiting teachers—especially those serving in spiritual, contemplative, or pastoral roles—are often approached by students and participants experiencing emotional distress or mental health challenges. While the College is committed to providing compassionate support, it is essential that all personnel operate within appropriate scope of practice boundaries.

### **Scope of the College's Role**

Maitripa College's role includes:

- Providing educational, contemplative, and community programming grounded in Buddhist philosophy and practice.
- Offering compassionate listening, guidance related to coursework and spiritual development, and supportive learning environments.
- Identifying signs of distress and connecting individuals with appropriate resources.
- Maintaining safe environments in classrooms, rituals, retreats, pilgrimages, and online spaces.

### **Limitations of the College's Role**

Maitripa College, its faculty, and its spiritual teachers do not:

- Provide psychotherapy, mental health diagnosis, or clinical treatment.
- Serve as crisis counselors or emergency responders.
- Offer medical or legal advice.
- Engage in long-term pastoral counseling that substitutes for clinical care.
- Assume responsibility for managing a participant's ongoing mental health conditions.

### **Appropriate Responses to Mental Health Concerns**

Faculty, staff, and teachers are expected to:

- Offer compassionate presence and attentive listening within professional boundaries.
- Avoid making promises of confidentiality when there is risk of harm.
- Refer individuals to appropriate external mental health or crisis resources.
- Notify Student Services or Academic Affairs when concerns arise about a student's safety or ability to participate.
- Document and report any situations involving imminent risk, threats of harm, or significant disruption.

### **When to Refer Immediately**

Immediate referral to external professional resources is required when an individual:

- Expresses suicidal ideation, intent, or plan
- Exhibits behavior indicating risk of harm to self or others
- Presents symptoms of acute psychological distress (e.g., hallucinations, severe disorientation, loss of functioning)
- Requests services or support beyond educational or spiritual guidance
- Requires assessment for accommodations or disability support

### **Online Teaching and Remote Contact**

Instructors and staff must recognize that remote settings may make it harder to assess risk. In online environments:

- Faculty should redirect students to local emergency resources when needed.
- No faculty or staff should attempt to intervene directly in emergencies or manage crises online.

## Principles

Maitripa College's duty of care is grounded in:

- Safety and Non-Harm: Preventing physical, psychological, and spiritual harm.
- Compassionate Presence: Creating supportive learning environments rooted in respect and dignity.
- Ethical Conduct: Upholding the FPMT Ethical Policy, institutional Codes of Conduct, and applicable U.S. federal, state, and local laws.
- Equitable Access: Supporting individuals through reasonable accommodations where feasible.
- Professional Boundaries: Maintaining appropriate teacher–student and staff–participant relationships.

## Roles and Responsibilities

### **Institutional Responsibilities**

Maitripa College will:

- Maintain safe and accessible facilities, classrooms, and online systems.
- Provide training regarding duty of care expectations.
- Offer clear mechanisms for reporting concerns, grievances, or safety issues.
- Investigate and respond promptly to reports of potential harm or misconduct.
- Provide reasonable accommodations for individuals with disabilities as required by law.
- Review this policy regularly and update it as needed.

### **Faculty, Staff, and Volunteer Responsibilities**

All faculty, staff, contractors, and volunteers are expected to:

- Model ethical conduct and uphold professional boundaries.
- Cultivate inclusive and respectful learning environments.
- Remain aware of signs of student distress and elevate concerns appropriately.
- Report allegations or concerns involving harm, misconduct, or safety to designated administrators.
- Maintain confidentiality except where disclosure is legally required or necessary for safety.
- Fulfill any legal obligations related to mandated reporting (e.g., when working with minors).

### **Student and Participant Responsibilities**

Students and program participants are expected to:

- Treat peers, instructors, and staff with respect and dignity.
- Follow College policies, community guidelines, and safety instructions.
- Communicate concerns or needs in a timely manner.
- Avoid behavior that poses risk to themselves or others.

## Safety and Well-Being Procedures

### **Physical Safety**

- Regular review of facilities for accessibility, hazards, and emergency readiness.
- Clear protocols for accidents, medical emergencies, fire safety, and evacuation.
- Guidance for off-site activities, including retreats and pilgrimage.

### **Psychological and Emotional Well-Being**

- Trauma-informed guidelines for contemplative practices, rituals, and teachings.
- Participants may opt out of practices at any time.
- Referral pathways to appropriate external mental health resources.
- Procedures for managing student distress or crisis situations.

### **Online Safety**

- Expectations for respectful digital conduct.
- Moderation guidelines for online classes, Sangha spaces, and forums.
- Security measures to protect privacy and sensitive information.

### Reporting and Response

#### **Reporting Mechanisms**

Reports may be made to:

- Student Services
- Academic Affairs
- Designated Protection People (see *Safeguarding Students*)

Anonymous reporting mechanisms may be provided when feasible.

#### **Response Procedures**

Upon receiving a report:

- The College will conduct an initial review and risk assessment.
- Appropriate interim measures may be taken to ensure safety.
- Investigations will be conducted promptly and sensitively.
- Outcomes will be communicated within the limits of privacy laws.
- Restorative, protective, or disciplinary actions may follow, depending on findings.

### Confidentiality and Data Protection

- Information related to reports will be handled on a need-to-know basis.
- Confidentiality may be limited when safety concerns or legal obligations require disclosure.
- Records will be stored securely and in accordance with institutional and legal requirements.

### Training and Awareness

- Orientation for new faculty, staff, contractors, and volunteers will include duty of care components.
- Students and participants will be informed of key expectations at the start of each program.
- Annual refresher training will be provided for relevant personnel.

### Review and Continuous Improvement

This policy will be reviewed biennially, or sooner if required by legal or accreditation changes. Feedback from students, faculty, staff, and community partners will inform improvements.

### Related Policies

- FPMT Ethical Policy
- Codes of Conduct
- Grievance and Complaint Procedures
- Safeguarding Students
- Accessibility and Accommodations Policy
- Emergency Response Plan

### *End of Duty of Care Policy*

#### SAFEGUARDING STUDENTS

Building on that general duty, the safeguarding policy describes the College's overarching protective framework for preventing harm, supporting vulnerable individuals, and directing concerns to the appropriate response channels.

Maitripa College is committed to the safety and protection of all who attend classes and programs here, or who interact with us in any way. In order to ensure an environment of safety for all, Maitripa College personnel and students abide by a code of conduct under the general label of "safeguarding," which is inclusive of specific policies, procedures, and protocols intended to keep all of us safe, and intended to provide clarity on recourse should a complaint arise.

Safeguarding is about doing everything we can to make sure all of our students and staff are kept safe and protected from harm. The government provides statutory guidance to colleges on what they need to do to achieve this. We adhere to all guidance through our policies and we pride ourselves on going above and beyond to make Maitripa College a safe, joyful, and nourishing environment for all. The Maitripa College culture is one that values kindness, compassion, and respect for all perspectives and ways of life. As we are committed to the ethics of non-harm, we emphasize a strong reliance on a personal ethics practice, which begins with refraining from harming other beings through avoiding the five basic types of harm:

- Refraining from taking life
- Refraining from taking what is not given
- Refraining from sexual misconduct
- Refraining from false speech
- Refraining from indulging in intoxicants

Our policies cover and relate to activities and events at Maitripa College only, and include the following:

- Anti-discrimination
- Anti-harassment and anti-misconduct (including sexual and sexual misconduct)
- The needs of students with medical
- Age discrimination
- Health and safety

- Bullying, including cyber-bullying
- First Aid
- Drug and substance misuse
- Grievance policies and procedure

Please see the Maitripa College Catalog for these explicit policies, and our Designated Protection Person information and Grievance Procedures for more information about how and where to report concerns.

Maitripa College has the resources and knowledge to support students in their spiritual development while connected to our community. However, some of the issues that may arise for students, faculty, or staff individually may be beyond the scope of what we can reasonably address at Maitripa College. If that is the case, we will refer you to trusted resources.

#### DESIGNATED PROTECTION PEOPLE AT MAITRIPA COLLEGE

As part of the College’s safeguarding framework, the Designated Protection People serve as accessible points of contact for complaints, concerns, questions, and reports of abuse or misconduct.

In order to ensure the safety and protection of all who attend classes and programs here, or who interact with us in any way, Maitripa College has appointed four Designated Protection People to act as contact points and facilitators between anyone with a concern and Maitripa College administration.

There are three main functions for a Designated Protection Person\*, which are as follows:

1. To act as an advocate and guide for the individual filing the complaint or concern
2. To act independently in reporting concerns of abuse
3. To oversee the preparation and implementation of the College Safeguarding policy.

\*Note: Please be aware: a Designated Protection Person (DPP) is not an expert in child or adult protection.

If you have a complaint, concern, or question, please start by contacting any one of these individuals:

- |   |                              |
|---|------------------------------|
| • Namdrol Miranda Adams, President                      | education@maitripa.org       |
| • Tiffany Blumenthal Patrella, Chief Operations Officer | studentservices@maitripa.org |
| • Pamela Cayton, Board Member                           | pamcayton@gmail.com          |
| • Alberto Fournier, Board Member                        | AlberFourn@aol.com           |

## SEXUAL MISCONDUCT POLICY

The following policy addresses sexual misconduct specifically and should be read alongside the College's broader duty of care and safeguarding commitments. It establishes standards of conduct, reporting expectations, and the College's commitment to prompt and compassionate response.

### Purpose

This policy affirms Maitripa College's commitment to providing a safe, respectful, and compassionate environment, rooted in Buddhist ethical principles of non-harming, respect, and the dignity of all beings. Sexual misconduct is strictly prohibited and will not be tolerated in any form. This policy applies to all members of the College community, including students, faculty, staff, volunteers, and visitors, regardless of gender identity or sexual orientation.

### Definitions

Sexual Misconduct includes, but is not limited to:

- Sexual harassment (unwelcome sexual advances, requests for sexual favors, or other verbal/physical conduct of a sexual nature)
- Sexual assault or any non-consensual sexual contact
- Coercion or manipulation to obtain sexual favors
- Any sexual activity without clear, enthusiastic, and ongoing consent
- Exploitative relationships, especially those involving power differentials (e.g., teacher-student, supervisor-subordinate)

Consent is a clear, voluntary, and affirmative agreement to engage in specific sexual activity.

Consent cannot be obtained through force, intimidation, coercion, or when a person is incapacitated.

### Special Considerations in Buddhist Context

The teacher-student relationship is recognized as a sacred bond based on trust, respect, and the student's spiritual well-being. Any sexual relationship between teachers and students is strictly prohibited, regardless of perceived consent, due to inherent power imbalances and the potential for harm. The College upholds the Buddhist precept to "abandon sexual misconduct," emphasizing non-harming and mutual respect in all interactions.

### Zero Tolerance for Abuse

The College maintains a zero-tolerance policy for all forms of abuse, including sexual, emotional, physical, financial, and psychological abuse.

Any behavior that is exploitative, coercive, or an abuse of power is strictly forbidden and grounds for disciplinary action, including dismissal from the College or revocation of teaching authority.

### Reporting and Response

Any member of the community who experiences or witnesses sexual misconduct is strongly encouraged to report the incident as outlined in Maitripa College's Safeguarding Students Policy and Reporting Procedures. (<https://maitripa.org/registrar/maitripa-college-catalog/policies/general-policies-and-procedures/safeguarding-students/>).

Reports will be handled promptly, confidentially, and with compassion for all parties involved. Retaliation against individuals who report misconduct or participate in investigations is strictly prohibited and will result in additional disciplinary action.

#### Investigation and Resolution

All reports of sexual misconduct will be investigated thoroughly and impartially.

The College will take steps to end the misconduct, prevent its recurrence, and address its effects on the survivor and the community.

Sanctions for violations may include warnings, suspension, expulsion, termination of employment, or revocation of teaching authorization.

#### Education and Prevention

The College will provide ongoing education and training to all staff and students on sexual misconduct prevention, consent, and healthy boundaries, with attention to the unique dynamics of Buddhist teacher-student relationships.

#### Support and Resources

Survivors of sexual misconduct will have access to counseling, spiritual support, and external resources as needed.

The College is committed to fostering a culture of safety, transparency, and respect, in alignment with Buddhist values and ethical standards.

This policy is reviewed annually and updated as necessary to reflect best practices and the evolving needs of our community.

#### CONSENSUAL RELATIONSHIPS POLICY

The following policy addresses relationships in which power differentials, supervisory authority, spiritual authority, or evaluative responsibility may compromise consent, create conflicts of interest, or undermine the integrity of the educational environment.

#### Institutional Commitment

This policy upholds Maitripa College's mission to foster a community rooted in integrity, mutual respect, and ethical conduct. This policy reflects the College's dedication to maintaining a community where relationships are grounded in transparency, accountability, and respect for institutional and religious values.

#### Prohibited Relationships

##### **Faculty/Staff and Students**

- Romantic or sexual relationships are prohibited between employees (faculty, staff, volunteers) and students under their direct supervision, instruction, or academic evaluation.
- Exceptions: Pre-existing relationships must be disclosed immediately to Human Resources (HR) or the Office of Academic Affairs to facilitate reassignment of supervisory and evaluative roles.

### **Supervisor-Subordinate Employees**

- Relationships are prohibited between employees where one holds evaluative, supervisory, or hiring authority over the other.
- If a relationship develops, the superior must disclose it to HR to remove conflicting responsibilities.

### **Clergy and Congregational Roles**

- Employees in ministerial or pastoral roles (e.g., chaplains, counselors) are prohibited from relationships with students or community members they advise spiritually.

### Mandatory Disclosure

- Employees and students must report prohibited or high-risk relationships to HR or a designated ethics officer.
- Failure to disclose may result in disciplinary action, including termination of employment.

### Mitigation Measures

- Academic/employment adjustments: Supervisors must create written plans to eliminate conflicts (e.g., transferring oversight, altering teaching assignments).
- Recusal: Individuals in prohibited relationships must avoid decisions impacting the other party (e.g., grading, promotions).

### Support and Confidentiality

- Concerns may be submitted to Maitripa College as outlined in Maitripa College's Safeguarding Students Policy and Reporting Procedures. (<https://maitripa.org/registrar/maitripa-college-catalog/policies/general-policies-and-procedures/safeguarding-students/>).
- The College will provide faith-based counseling to affected parties while maintaining confidentiality.

### Training and Education

- Annual training for faculty, staff, and students on identifying and reporting conflicts.
- Integration of this policy into new employee orientation and student handbooks.

### Non-Retaliation

- Retaliation against individuals who report concerns is strictly prohibited and may result in disciplinary action.

### Consequences for Violating the College's Consensual Relationship Policy

Violating Maitripa College's consensual relationship policy can result in a range of disciplinary actions, depending on the severity and context of the violation. These consequences are designed to protect the integrity of the educational environment, uphold professional standards, and minimize conflicts of interest and potential harm to students and employees

Consequences may include:

### **Disciplinary Action (Up to Dismissal)**

- Individuals found to be in violation of the policy may face disciplinary measures ranging from formal warnings and reprimands to suspension or dismissal (termination of employment or expulsion for students).
- Dismissal is typically reserved for the most serious or repeated violations, such as ongoing undisclosed relationships or those involving clear abuses of power.

#### **Removal or Reassignment of Duties**

- The College may remove the violator from any supervisory, evaluative, or instructional role over the other party involved in the relationship.
- In some cases, reassignment or restructuring of job duties may be used as a corrective measure, especially if the relationship is disclosed after it has begun.

#### **Separate Violations for Non-Disclosure**

- Failing to report a prohibited or high-risk relationship is itself a violation and can lead to additional disciplinary action, even if the relationship would otherwise be permitted under disclosure rules.

#### **Investigation and Documentation**

- Violations are typically investigated by Human Resources or a designated College office. The investigation may include reviewing all relevant information, and findings may be documented in personnel or student files.

#### **Impact on Professional Reputation**

- Even beyond formal discipline, violating the policy can damage an individual's professional reputation, undermine trust within the College community, and potentially lead to legal liability for the College or individuals involved.

This policy is reviewed annually and updated as necessary to reflect best practices and the evolving needs of our community.

### ACADEMIC AND COMMUNITY STANDARDS

#### ACADEMIC INTEGRITY AND STUDENT CONDUCT POLICY

##### Academic Integrity

The institution is committed to maintaining the highest standards of academic integrity. Students are expected to submit work that reflects their own knowledge and competence and to engage honestly in all academic activities.

Violations of academic integrity include, but are not limited to:

- Plagiarism
- Cheating
- Unauthorized collaboration
- Fabrication or falsification of information
- Misrepresentation of authorship
- Misuse of artificial intelligence or technology not expressly permitted
- Identity misrepresentation (allowing another individual to complete academic work)

Students are responsible for understanding academic expectations, properly citing sources, and seeking clarification when needed.

#### Student Conduct in Academic Environments

Students are expected to:

- Communicate respectfully and professionally
- Follow course requirements and faculty instructions
- Engage constructively in learning activities
- Respect intellectual property and confidentiality

Disruptive, abusive, or dishonest behavior in academic settings, including online environments, is prohibited.

#### Student Identity Verification

The institution employs processes to verify that the student who enrolls is the same individual who completes coursework and assessments. These may include secure login credentials, identity verification procedures, proctored assessments, and other appropriate methods.

#### Assessment Integrity

Assessments are designed to ensure that student work reflects individual learning and achievement of stated outcomes. The institution may use tools and methods such as originality review, faculty evaluation of student work, and additional verification when necessary.

#### Violations and Sanctions

Violations of academic integrity or student conduct may result in disciplinary action, including:

- Revision or resubmission of work
- Grade penalties or course failure
- Academic probation
- Suspension or dismissal

#### Publication and Acknowledgment

This policy is published in the academic catalog and student handbook. Students are required to acknowledge receipt and understanding of these policies prior to beginning coursework.

### COMMUNITY STANDARDS AND ETHICAL CONDUCT POLICY

#### Community Standards

The institution affirms that its learning environment, both physical and virtual, is a shared space that supports the wellbeing, dignity, and development of all members. In alignment with its mission, students are expected to conduct themselves with integrity, respect, and personal responsibility.

Students are expected to:

- Treat others with respect and professionalism
- Support a safe and inclusive environment
- Respect institutional property and the rights of others

- Comply with institutional policies and applicable laws

#### Prohibited Conduct

The following behaviors are prohibited:

- Harassment or Discrimination: Any conduct that is threatening, abusive, or discriminatory
- Sexual Misconduct: Including sexual harassment, non-consensual contact, coercion, or exploitation; consent must be clear, voluntary, and ongoing
- Dishonesty: Providing false information or misrepresenting oneself in institutional matters
- Disruptive or Dangerous Behavior: Conduct that endangers the health or safety of oneself or others
- Unauthorized Access or Tampering: Interfering with institutional systems, records, or personnel
- Theft or Property Misuse: Unauthorized taking or use of property
- Substance Use: Use or possession of alcohol or illegal drugs in institutional settings, unless expressly authorized
- Smoking: Smoking in institutional facilities or learning environments
- Failure to Participate: Failure to meet required attendance or participation expectations in residency or program activities
- Failure to Respond: Failure to respond to official institutional communications in a timely manner
- Recording and Intellectual Property Violations: Unauthorized recording, reproduction, or distribution of course materials

#### Sanctions

Violations of community standards may result in disciplinary action, including warnings, required remediation, probation, suspension, or dismissal.

#### Relationship to Academic Policy

The Academic Integrity and Student Conduct Policy governs academic work and learning environments. The Community Standards and Ethical Conduct Policy governs behavior, safety, and community interactions. Violations may be addressed under one or both policies as appropriate.

#### Publication

This policy is published in the academic catalog and student handbook and applies to all students.

### GRIEVANCE AND RESOLUTION PROCEDURES

#### GRIEVANCES AND SANCTIONS

#### Committee on Student Relations and Conduct

Engagement in any one of the abovementioned prohibited activities by a student of Maitripa College while on school grounds will result in the student's referral to the Committee on Student

Relations and Conduct, and the imposition of disciplinary sanctions. These sanctions may include, but are not limited to, the following:

- Verbal or written warnings
- Disciplinary or academic probation
- Maitripa College reserves the right to immediately suspend a student, pending further action, who threatens the life or property of another person or school property or who behaves in a way that could be perceived as violent or potentially violent. Maitripa College also reserves the right to immediately and permanently suspend a student for a second violation of these guidelines.

Adjudication Process on Grievances and Sanctions (First Offense)

1. Following a first offense incident, a Maitripa College Student Conduct/Incident Report will be filed with the Maitripa College Committee on Student Relations and Conduct by a staff member, faculty member, or student who witnessed or was involved in the incident
2. Following the filing of the Conduct/Incident Report, one or more members of the Maitripa College Committee on Student Relations and Conduct and/or a staff member will meet with the student with the intent of collecting information about the student's perspective on the events
3. A follow-up report will be made in writing to the Maitripa College Committee on Student Relations and Conduct
4. Within three weeks of the interview, the student will be presented by mail with a disciplinary notice that includes the following:
  - a. An objective description of the specific behaviors that are being addressed
  - b. The section/s of the Student Handbook that were violated
  - c. A description of the expected behaviors and the specific consequences of not meeting those expectations.
  - d. An explanation of the period of probation that the student will be expected to adhere to and a clear definition of what activities they will be allowed or not allowed to participate in during their probation. Normally a first offense violation will not result in the suspension of any activities, or will only result in the suspension of activities that are directly related to the violation. This decision will be determined on a case-by-case basis by the Maitripa College Committee on Student Relations and Conduct.
  - e. An explanation that clearly states that the student is being observed during this time
  - f. A clear explanation of the consequences should the student incur another violation during this time
  - g. Signatures of the Maitripa College Committee on Student Relations and Conduct, and relevant staff members
5. The student will sign and date the document, and return it to the office. If the student does not return the document to the office within 2 weeks, the document will be considered null and void and the student will be considered suspended from participation in activities at Maitripa College.
6. At the end of the probationary period, the Maitripa College Committee on Student Relations and Conduct will present a formal recommendation to end the probation,

extend the probationary period, or announce the implementation of the consequences described in the original document.

7. Decisions made by the Maitripa College Committee on Student Relations and Conduct are final.

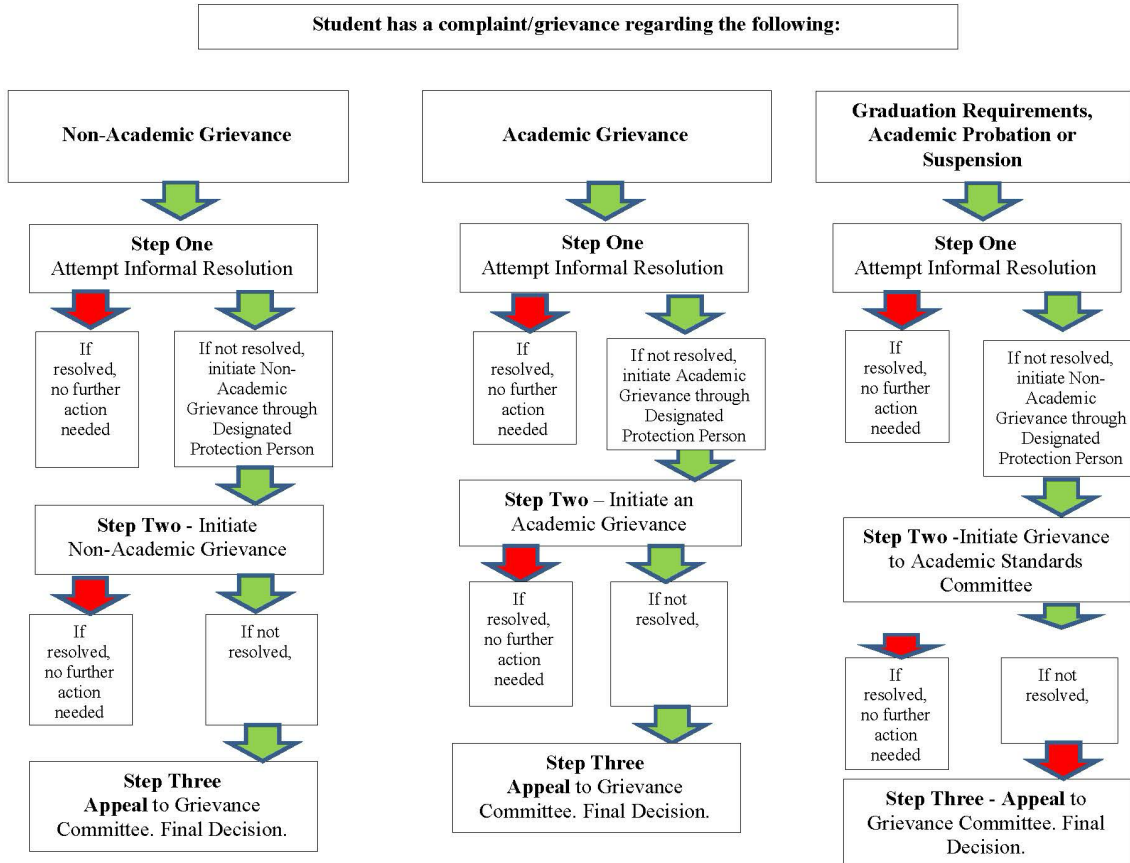
Adjudication Process on Grievances and Sanctions (Second Offense)

1. If a student commits another reported offense during the time of probation, the Maitripa College Committee on Student Relations and Conduct will present that student with formal suspension from all Maitripa College activities for as long as they deem appropriate. This suspension may be permanent.

STUDENT COMPLAINT AND GRIEVANCE PROCEDURES FLOWCHART

v. 8/10/21

Maitripa College  
Student Complaint and Grievance Procedures  
Flow Chart



## LEGAL AND REGULATORY NOTICES

### STATE AUTHORIZATION FOR DISTANCE EDUCATION

Maitripa College is committed to transparency regarding our ability to enroll students in online and distance education programs. We encourage prospective students residing outside of Oregon to read the following carefully before applying.

#### Federal Requirements

The U.S. Department of Education requires institutions offering distance education to comply with the authorization requirements of each state in which they enroll students. Where a state requires authorization, institutions must obtain it before enrolling residents of that state. Institutions are also required to disclose to prospective and current students if they are not authorized to enroll students in a particular state.

#### Oregon Authorization

Maitripa College is a non-profit corporation authorized by the State of Oregon to offer and confer the academic degrees described herein, following a determination that state academic standards will be satisfied under OAR 583-030. Inquiries concerning the standards or school compliance may be directed to the Office of Degree Authorization, Higher Education Coordinating Commission, 3225 25<sup>th</sup> Street SE, Salem, Oregon 97302.

#### States from Which Maitripa College May Enroll Online Students

Below is the list of states from which Maitripa College is currently authorized or exempt from authorization to enroll distance education students:

##### **Arizona**

- Exempt from authorization under A.R.S. §32-3022(E) as programs used solely for religious purposes within a tax-exempt religious organization. Confirmed in writing by the Arizona State Board for Private Postsecondary Education.

##### **Florida**

- No authorization required. The Florida Commission for Independent Education has determined in writing that Maitripa College does not trigger a physical presence requirement in Florida.

##### **Oregon**

- Maitripa College is a non-profit corporation authorized by the State of Oregon to offer and confer the academic degrees described herein, following a determination that state academic standards will be satisfied under OAR 583-030. Inquiries concerning the standards or school compliance may be directed to the Office of Degree Authorization, Higher Education Coordinating Commission, 3225 25<sup>th</sup> Street SE, Salem, Oregon 97302.

##### **Pennsylvania**

- No authorization currently required. Maitripa College does not maintain a physical presence in Pennsylvania as defined under 22 Pa. Code §31.2. Students are encouraged to contact us to confirm current enrollment eligibility.

## Washington

- No authorization required. The Washington Student Achievement Council has confirmed in writing that Maitripa College's programs, which include in-person instruction at the home campus in Oregon, do not trigger authorization requirements in Washington State.

## Wisconsin

- Exempt from authorization under SPS 440.52(1)(e)3 as religiously-focused degree programs. Confirmed in writing by the Wisconsin Educational Approval Program. This exemption applies provided Maitripa College does not offer non-denominational courses.

Maitripa College cannot enroll online or distance education students in states or U.S. territories not listed above. If you are from a state not currently listed, please contact us at [registrar@maitripa.org](mailto:registrar@maitripa.org) to inquire about whether we may be able to pursue compliance with your state.

### Notice to Currently Enrolled Students Who Relocate

If, while enrolled in a distance education program with Maitripa College, you relocate to a state in which we are not authorized to enroll students, you may lose eligibility to remain enrolled in your program. Please contact the Registrar if you anticipate relocating while completing your degree. Prospective students should consider this regulation prior to applying, particularly if relocation to an unauthorized state is possible before program completion.

### Student Complaint Procedure

Students should first attempt to resolve any grievances through their school's complaint process. Should attempts to resolve these problems through the school's complaint process fail, or should the student be dissatisfied with the final outcome of that process, then the student may contact the Higher Education Coordinating Commission (HECC), to inquire about the HECC's complaint process.

Students may mail inquiries to the Higher Education Coordinating Commission at 3225 25th St. SE, Salem, OR 97302 or send an email to [complaints@hecc.oregon.gov](mailto:complaints@hecc.oregon.gov). Students may also access the HECC Complaints web page for information (<https://www.oregon.gov/highered/about/Pages/complaints.aspx>)

Students who are unable to resolve a complaint through Maitripa College's internal grievance process have the right to contact the appropriate state agency in their state of residence.

A directory of state complaint agencies for students in other states is maintained by the State Higher Education Executive Officers Association (SHEEO) at <https://sheeo.org>.

### Contact

For questions about state authorization or to inquire about enrollment eligibility in your state, please contact:

Registrar, Maitripa College  
[registrar@maitripa.org](mailto:registrar@maitripa.org)  
Portland, Oregon

## CAMPUS SAFETY AND EMERGENCY PROCEDURES

---

Safety and emergency procedures are posted in the Maitripa building according to the rules and regulations established by the fire departments and other governmental agencies in the state of Oregon. Compliance with these procedures and regulations will be strictly enforced.

It is important that all students, staff, and faculty maintain their Emergency Contact information in Populi for use in the event of an emergency, crisis, or significant disruption. In case of a personal emergency, the designated contact or contacts will be advised by the school on the situation at hand. In case of a medical emergency that requires immediate attention, the student, staff, or faculty will be moved by ambulance service or taken to the nearest hospital for immediate attention.

Maitripa College encourages you to report suspected crimes and emergencies as promptly and accurately as possible. In case of emergency at any time, night or day, call 911. If you call 911 from your cell phone, remember to provide your location.

- Sign up for Public Alerts by registering at <https://www.publicalerts.org/> to be kept informed of urgent safety alerts by the City of Portland. Maitripa College urges all students, faculty, administration, and community members to do this.
- Be aware of the closest Basic Earthquake Emergency Communication Node (BEECN) to your location; this is a place to go after a major earthquake if phone service is down to report damage and ask for help. The closest BEECN to Maitripa College is in Brooklyn Park, at SE Haig St and SE Milwaukee St. Visit [portlandoregon.gov/beecn](http://portlandoregon.gov/beecn) for more information.
- Read the PDX Monthly article by Randy Gragg with Sarah Hutchins (2018) for information on earthquake awareness and survival: “The Big One Is Coming. What Will Happen to Portland? The Northwest is long overdue for a devastating earthquake. Here’s what to know.” (<https://www.pdxmonthly.com/home-and-real-estate/2018/02/the-big-one-is-coming-what-will-happen-to-portland>)
- During an earthquake, the simple steps are **Duck, Cover, and Hold!** Watch the University of Oregon video here: <https://www.youtube.com/watch?v=O-MycATjypg>
- 

### Safety Reminders During Earthquake



# IMPORTANT PHONE NUMBERS AND CONTACT INFORMATION

---

## STUDENT INFORMATION

All students are expected to keep their personal information up to date in Populi, such as phone number, address, and email.

## MAITRIPA FACULTY AND ADMINISTRATION CONTACT INFORMATION

Office phone number: 503-235-2477

## FACULTY AND SENIOR SANGHA

Namdrol Miranda Adams	<a href="mailto:education@maitripa.org">education@maitripa.org</a>
Sam Go	<a href="mailto:s.go@maitripa.org">s.go@maitripa.org</a>
Venerable Drolma Ann Kane	<a href="mailto:drolma.ann@maitripa.org">drolma.ann@maitripa.org</a>
Patrick Lambelet	<a href="mailto:p.lambelet@maitripa.org">p.lambelet@maitripa.org</a>
Leigh Miller	<a href="mailto:program@maitripa.org">program@maitripa.org</a>
Tiffany Blumenthal Patrella	<a href="mailto:studentservices@maitripa.org">studentservices@maitripa.org</a>
Venerable Lozang Yönten	<a href="mailto:l.yonten@maitripa.org">l.yonten@maitripa.org</a>

## ADMINISTRATION

Namdrol Miranda Adams	<a href="mailto:education@maitripa.org">education@maitripa.org</a>
Tiffany Blumenthal Patrella	<a href="mailto:studentservices@maitripa.org">studentservices@maitripa.org</a>
Sam Go	<a href="mailto:accounts@maitripa.org">accounts@maitripa.org</a>
Alfredo Pineiro	<a href="mailto:technicalservices@maitripa.org">technicalservices@maitripa.org</a>
Lozang Yönten	<a href="mailto:l.yonten@maitripa.org">l.yonten@maitripa.org</a>
Leigh Miller	<a href="mailto:program@maitripa.org">program@maitripa.org</a>
Linda Brown	<a href="mailto:library@maitripa.org">library@maitripa.org</a> / <a href="mailto:registrar@maitripa.org">registrar@maitripa.org</a>
Louise Light	<a href="mailto:graphics@maitripa.org">graphics@maitripa.org</a>
Alexandria Levy	<a href="mailto:admin@maitripa.org">admin@maitripa.org</a>



**MAITRIPA COLLEGE**  
**1632 SE 11<sup>th</sup> AVENUE**  
**PORTLAND, OR 97214**  
**503.235.2477**  
**[www.maitripa.org](http://www.maitripa.org)**